

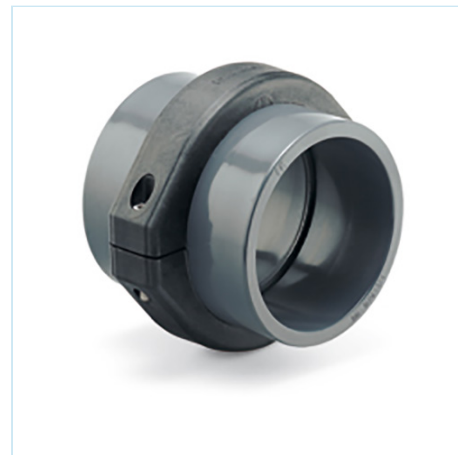


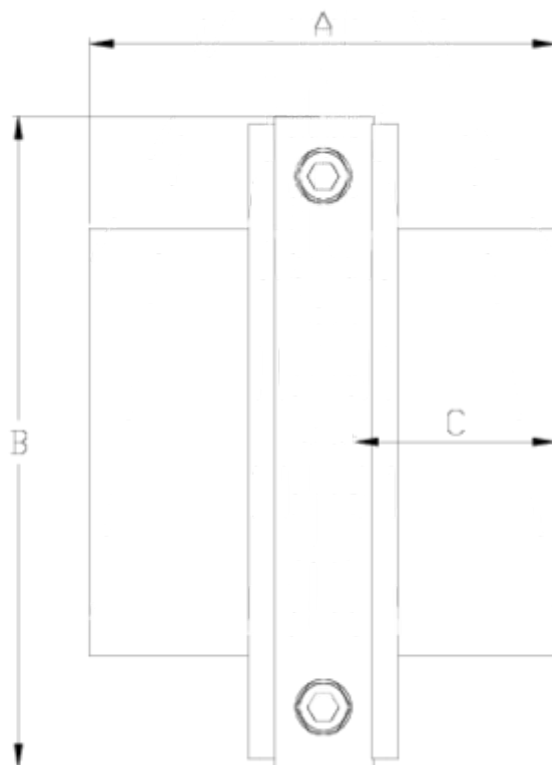
Accesorios de presión Netvitc System®

Enlace 3 piezas BS encolar

ITEM 13N

| REFERENCIA | DESCRIPCIÓN | Peso neto | Volumen (m ³) | Peso bruto | Unidades lote |
|------------|---------------------------------|-----------|---------------------------|------------|---------------|
| 1010333 | E. 3 PZS NETVITC SYS 1 1/4" IMP | 0,305 | 0,00892 | 2,58 | 8 |
| 1010334 | E. 3 PZS NETVITC SYS 1 1/2" IMP | 0,459788 | 0,01553 | 4,005 | 8 |
| 1010335 | E. 3 PZS NETVITC SYS 2" IMP | 0,437413 | 0,01553 | 3,826 | 8 |
| 1010336 | E. 3 PZS NETVITC SYS 2 1/2" IMP | 0,65 | 0,03129 | 5,76 | 8 |
| 1010337 | E. 3 PZS NETVITC SYS 3" IMP | 0,8833 | 0,01553 | 3,86 | 4 |
| 1010338 | E. 3 PZS NETVITC SYS 4" IMP | 1,208325 | 0,02244 | 5,321 | 4 |
| 1010340 | E. 3 PZS NETVITC SYS 5" IMP | 2,21 | 0,02244 | 4,98 | 2 |
| 1010341 | E. 3 PZS NETVITC SYS 6" IMP | 1,30255 | 0,01782 | 2,86 | 2 |
| 1010342 | E. 3 PZS NETVITC SYS 8" IMP | 6,5285 | 0,03129 | 13,63 | 2 |





ITEM 13N | Enlace 3 piezas BS encolar

| CÓDIGO | Ø | PESO (g) | BRIDA | A | B | C | PN | MEDIDA |
|--------|--------|----------|-------|-----|-----|-----|------|--------|
| 10333 | 1 1/4" | 326 | 63 | 102 | 125 | 28 | PN10 | BS |
| 10334 | 1 1/2" | 374 | 63 | 106 | 125 | 31 | PN10 | BS |
| 10335 | 2" | 366 | 63 | 80 | 125 | 36 | PN10 | BS |
| 10336 | 2 1/2" | 456 | 75 | 94 | 138 | 44 | PN10 | BS |
| 10337 | 3" | 839 | 90 | 120 | 164 | 52 | PN10 | BS |
| 10338 | 4" | 1223 | 110 | 132 | 188 | 61 | PN10 | BS |
| 10340 | 5" | 2306 | 140 | 176 | 224 | 78 | PN10 | BS |
| 10341 | 6" | 2840 | 160 | 180 | 251 | 86 | PN10 | BS |
| 10342 | 8" | 4587 | 200 | 244 | 297 | 106 | PN10 | BS |



Documentación de Producto



Certificados de Producto

Certificados de Empresa

