



Collarines toma

Collarín toma simple 4 tornillos

ITEM 126



| REFERENCIA | DESCRIPCIÓN | Peso neto | Volumen (m ³) | Peso bruto | Unidades lote |
|------------|--------------------------------|-----------|---------------------------|------------|---------------|
| 1003011 | COLLARIN TOMA SIMPLE 63-1/2" | 0,239078 | 0,04879 | 14,92 | 60 |
| 1003012 | COLLARIN TOMA SIMPLE 63-3/4" | 0,234162 | 0,04879 | 14,625 | 60 |
| 1003013 | COLLARIN TOMA SIMPLE 63-1" | 0,244662 | 0,04879 | 15,2527 | 60 |
| 1003014 | COLLARIN TOMA SIMPLE 63-1 1/4 | 0,253662 | 0,06347 | 16,275 | 60 |
| 1003015 | COLLARIN TOMA SIMPLE 63-1 1/2 | 0,254078 | 0,06347 | 16,3 | 60 |
| 1003016 | COLLARIN TOMA SIMPLE 75-1/2" | 0,301003 | 0,04460 | 11,545 | 35 |
| 1003017 | COLLARIN TOMA SIMPLE 75-3/4" | 0,301431 | 0,04460 | 11,56 | 35 |
| 1003018 | COLLARIN TOMA SIMPLE 75-1" | 0,308574 | 0,04460 | 11,81 | 35 |
| 1003019 | COLLARIN TOMA SIMPLE 75-1 1/4 | 0,323574 | 0,04460 | 12,335 | 35 |
| 1003020 | COLLARIN TOMA SIMPLE 75-1 1/2 | 0,333803 | 0,06347 | 12,75 | 35 |
| 1003021 | COLLARIN TOMA SIMPLE 75-2" | 0,370003 | 0,04879 | 13,53 | 35 |
| 1003022 | COLLARIN TOMA SIMPLE 90-1/2" | 0,342503 | 0,04117 | 11,245 | 30 |
| 1003023 | COLLARIN TOMA SIMPLE 90-3/4" | 0,347503 | 0,04460 | 11,395 | 30 |
| 1003024 | COLLARIN TOMA SIMPLE 90-1" | 0,35767 | 0,06347 | 11,7 | 30 |
| 1003025 | COLLARIN TOMA SIMPLE 90-1 1/4 | 0,370503 | 0,04460 | 12,085 | 30 |
| 1003026 | COLLARIN TOMA SIMPLE 90-1 1/2 | 0,369103 | 0,06347 | 12,1 | 30 |
| 1003027 | COLLARIN TOMA SIMPLE 90-2" | 0,416337 | 0,06150 | 13,41 | 30 |
| 1003028 | COLLARIN TOMA SIMPLE 110-3/4" | 0,46898 | 0,06150 | 12,94 | 25 |
| 1003029 | COLLARIN TOMA SIMPLE 110-1" | 0,47498 | 0,06150 | 13,09 | 25 |
| 1003030 | COLLARIN TOMA SIMPLE 110-1 1/4 | 0,48738 | 0,06347 | 13,4 | 25 |
| 1003031 | COLLARIN TOMA SIMPLE 110-1 1/2 | 0,49858 | 0,06347 | 13,68 | 25 |
| 1003032 | COLLARIN TOMA SIMPLE 110-2" | 0,521675 | 0,06150 | 11,59 | 20 |
| 1003033 | COLLARIN TOMA SIMPLE 125-3/4" | 0,598268 | 0,06150 | 17,7 | 28 |





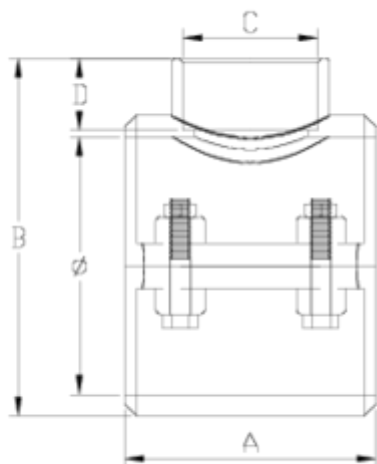
Collarines toma

Collarín toma simple 4 tornillos

ITEM 126



| REFERENCIA | DESCRIPCIÓN | Peso neto | Volumen (m ³) | contenido.Peso bruto | Unidades lote |
|------------|---------------------------------|-----------|---------------------------|----------------------|---------------|
| 1003034 | COLLARIN TOMA SIMPLE 125-1" | 0,580589 | 0,06150 | 17,205 | 28 |
| 1003035 | COLLARIN TOMA SIMPLE 125-1 1/4" | 0,587732 | 0,06150 | 17,405 | 28 |
| 1003036 | COLLARIN TOMA SIMPLE 125-1 1/2" | 0,596839 | 0,06150 | 17,66 | 28 |
| 1003037 | COLLARIN TOMA SIMPLE 125-2" | 0,602375 | 0,06150 | 17,815 | 28 |
| 1003105 | COLLARIN TOMA SIMPLE 110-2 1/2" | 0,5942 | 0,06150 | 13,04 | 20 |
| 1003107 | COLLARIN TOMA SIMPLE 125-2 1/2" | 0,67258 | 0,06150 | 17,76 | 25 |
| 1003115 | COLLARIN TOMA SIMPLE 110-1/2" | 0,47098 | 0,06150 | 12,99 | 25 |
| 1003119 | COLLARIN TOMA SIMPLE 125-1/2" | 0,573625 | 0,06150 | 17,01 | 28 |
| 1003143 | COLLARIN TOMA SIMPLE 50-1 1/4" | 0,268 | 0,03682 | 12,555 | 45 |



ITEM 126 | Collarín toma simple 4 tornillos

| Código | f tubo - C | Peso (g) | A | B | D | PN | TIPO ROSCA |
|--------|-------------|----------|----|-----|----|------|------------|
| 03143 | 50 - 1 1/4" | 289 | 70 | 99 | 23 | PN16 | BSP |
| 03011 | 63 - 1/2" | 237 | 70 | 94 | 16 | PN16 | BSP |
| 03012 | 63 - 3/4" | 236 | 70 | 94 | 17 | PN16 | BSP |
| 03013 | 63 - 1" | 244 | 70 | 99 | 21 | PN16 | BSP |
| 03014 | 63 - 1 1/4" | 250 | 70 | 99 | 23 | PN16 | BSP |
| 03015 | 63 - 1 1/2" | 262 | 70 | 99 | 31 | PN16 | BSP |
| 03016 | 75 - 1/2" | 317 | 85 | 112 | 16 | PN10 | BSP |
| 03017 | 75 - 3/4" | 309 | 85 | 112 | 17 | PN10 | BSP |
| 03018 | 75 - 1" | 315 | 85 | 112 | 21 | PN10 | BSP |
| 03019 | 75 - 1 1/4" | 329 | 85 | 114 | 23 | PN10 | BSP |



ITEM 126 | Collarín toma simple 4 tornillos

| | | | | | | | |
|-------|--------------|-----|-----|-----|----|------|-----|
| 03020 | 75 - 1 1/2" | 331 | 85 | 114 | 31 | PN10 | BSP |
| 03021 | 75 - 2" | 366 | 85 | 118 | 38 | PN10 | BSP |
| 03022 | 90 - 1/2" | 340 | 87 | 121 | 16 | PN10 | BSP |
| 03023 | 90 - 3/4" | 345 | 87 | 124 | 17 | PN10 | BSP |
| 03024 | 90 - 1" | 351 | 87 | 127 | 21 | PN10 | BSP |
| 03025 | 90 - 1 1/4" | 363 | 87 | 129 | 23 | PN10 | BSP |
| 03026 | 90 - 1 1/2" | 369 | 87 | 129 | 31 | PN10 | BSP |
| 03027 | 90 - 2" | 399 | 87 | 122 | 38 | PN10 | BSP |
| 03115 | 110 - 1/2" | 470 | 104 | 147 | 16 | PN10 | BSP |
| 03028 | 110 - 3/4" | 463 | 104 | 147 | 17 | PN10 | BSP |
| 03029 | 110 - 1" | 480 | 104 | 150 | 21 | PN10 | BSP |
| 03030 | 110 - 1 1/4" | 486 | 104 | 155 | 23 | PN10 | BSP |
| 03031 | 110 - 1 1/2" | 496 | 104 | 155 | 31 | PN10 | BSP |
| 03032 | 110 - 2" | 528 | 104 | 156 | 38 | PN10 | BSP |
| 03105 | 110 - 2 1/2" | 598 | 104 | 163 | 44 | PN10 | BSP |
| 03119 | 125 - 1/2" | 590 | 101 | 166 | 16 | PN10 | BSP |
| 03033 | 125 - 3/4" | 557 | 101 | 166 | 17 | PN10 | BSP |
| 03034 | 125 - 1" | 578 | 101 | 168 | 21 | PN10 | BSP |
| 03035 | 125 - 1 1/4" | 581 | 101 | 172 | 23 | PN10 | BSP |
| 03036 | 125 - 1 1/2" | 592 | 101 | 172 | 31 | PN10 | BSP |
| 03037 | 125 - 2" | 599 | 101 | 175 | 38 | PN10 | BSP |
| 03107 | 125 - 2 1/2" | 670 | 101 | 185 | 44 | PN10 | BSP |



Documentación de Producto



Certificados de Producto

Certificados de Empresa

