

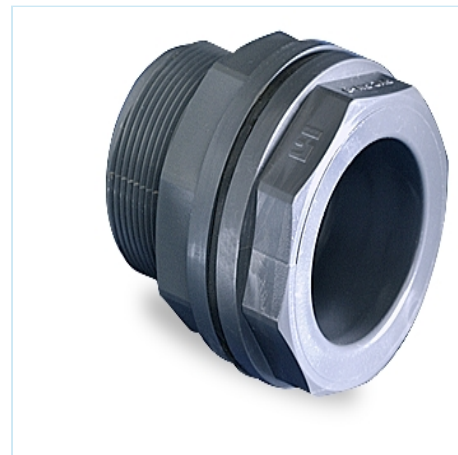


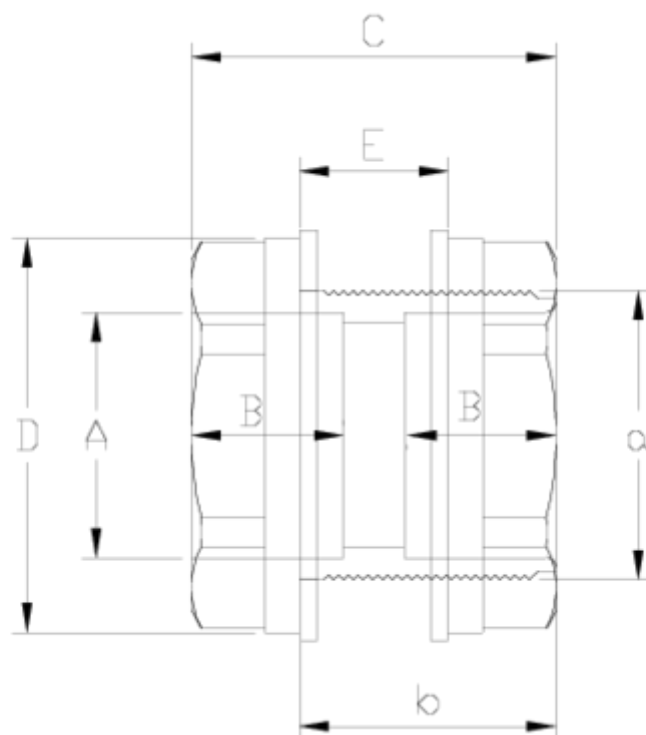
## PVC-U pressure fittings

# Tank adaptor

## ITEM 406

REFERENCE	DESCRIPTION	Net weight	Volumen (m <sup>3</sup> )	Gross weight	Unidades lote
1002772	PVC EPDM TANK ADAPTATOR 25-1"	0,069787	0,00892	2,305	30
1002773	PVC EPDM TANK ADAPTATOR 32-1 1/4"	0,1197	0,01553	3,965	30
1002774	PVC EPDM TANK ADAPTATOR 40-2"	0,275475	0,00892	4,595	16
1002775	PVC EPDM TANK ADAPTATOR 50-2"	0,2036	0,00892	3,485	16
1002777	PVC EPDM TANK ADAPTATOR 75-3"	0,4281	0,01553	2,895	6
1002778	PVC EPDM TANK ADAPTATOR 90-4"	1,043883	0,02243	6,59	6
1002780	PVC EPDM TANK ADAPTATOR 20-1"	0,080967	0,00891	2,619	30
1002781	PVC TANK ADAPTOR 20-1" FPM	0,08	0,00891	2,59	30
1002782	PVC FPM TANK ADAPTATOR 25-1"	0,07012	0,00892	2,315	30
1002783	PVC FPM TANK ADAPTATOR 32-1 1/4"	0,125	0,01553	4,1247	30
1002784	PVC FPM TANK ADAPTATOR 40-2"	0,277	0,00892	4,62	16
1002785	PVC FPM TANK ADAPTATOR 50-2"	0,206288	0,00892	3,488	16
1002787	PVC FPM TANK ADAPTATOR 75-3"	0,449717	0,01553	3,025	6
1002788	PVC FPM TANK ADAPTATOR 90-4"	1,05205	0,02243	6,8	6





## ITEM 406 | Tank adaptor

Codigo	A-a	Peso (g)	DN	B	b	C	D	E	MATERIAL	PN	ROSCA
02780	20-1"	79	15	16	47	62	50	38	EPDM	PN10	BSP
02772	25-1"	76	20	19	47	62	50	38	EPDM	PN10	BSP
02773	32-1 1/4"	112	25	21	53	69	64	33	EPDM	PN10	BSP
02774	40-2"	275	32	26	53	74	81	30	EPDM	PN10	BSP
02775	50-2"	208	40	31	53	74	81	30	EPDM	PN10	BSP
02777	75-3"	410	65	44	78	104	108	52	EPDM	PN10	BSP
02778	90-4"	890	80	51	90	120	140	60	EPDM	PN10	BSP
02781	20-1"	79	15	16	47	62	50	38	VITON	PN10	BSP
02782	25-1"	76	20	19	47	62	50	38	VITON	PN10	BSP
02783	32-1 1/4"	112	25	21	53	69	64	33	VITON	PN10	BSP



## ITEM 406 | Tank adaptor

02784	40 - 2"	275	32	26	53	74	81	30	VITON	<b>PN10</b>	BSP
02785	50 - 2"	208	40	31	53	74	81	30	VITON	<b>PN10</b>	BSP
02787	75-3"	410	65	44	78	104	108	52	VITON	<b>PN10</b>	BSP
02788	90-4"	890	80	51	90	120	140	60	VITON	<b>PN10</b>	BSP



## Product Documents



## Product Certificates



## Company Certificates

