



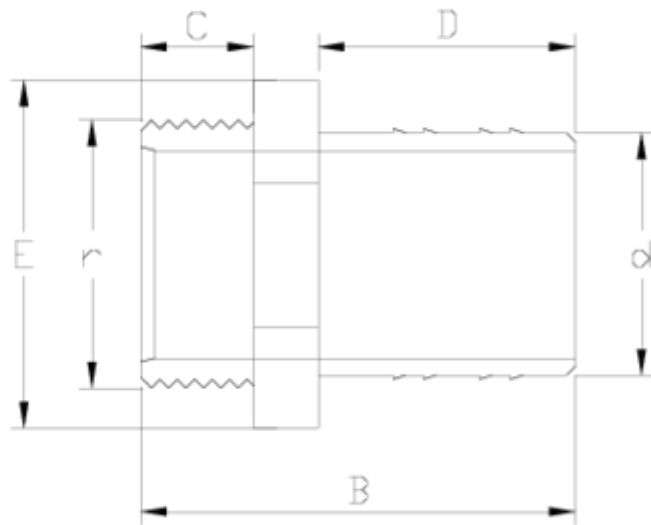
PVC-U pressure fittings

Spigot connection male thread

ITEM 906

| REFERENCE | DESCRIPTION | Net weight | Volumen (m ³) | Gross weight | Unidades lote |
|-----------|----------------------------------|------------|---------------------------|--------------|---------------|
| 1002961 | SPIGOT CONNECTION M/TH 3/4"-20 | 0,0196 | 0,00891 | 2,139 | 100 |
| 1002962 | SPIGOT CONNECTION M/TH 1"-32 | 0,036 | 0,00891 | 2,85 | 70 |
| 1002964 | SPIGOT CONNECTION M/TH 1 1/2"-50 | 0,085183 | 0,02243 | 3,895 | 40 |
| 1002965 | SPIGOT CONNECTION M/TH 2"-63 | 0,11322 | 0,00891 | 2,025 | 15 |





ITEM 906 | Spigot connection male thread

| Código | r x d | Peso (g) | B | C | D | E | PN | ROSCA |
|--------|-----------|----------|-----|----|----|----|------|-------|
| 02961 | 3/4"-20 | 17 | 62 | 17 | 36 | 27 | PN10 | BSP |
| 02962 | 1"-32 | 55 | 78 | 21 | 36 | 47 | PN10 | BSP |
| 02964 | 1 1/2"-50 | 83 | 89 | 22 | 50 | 57 | PN10 | BSP |
| 02965 | 2"-60 | 110 | 100 | 26 | 65 | 60 | PN10 | BSP |



Product Documents



Product Certificates



Company Certificates

