



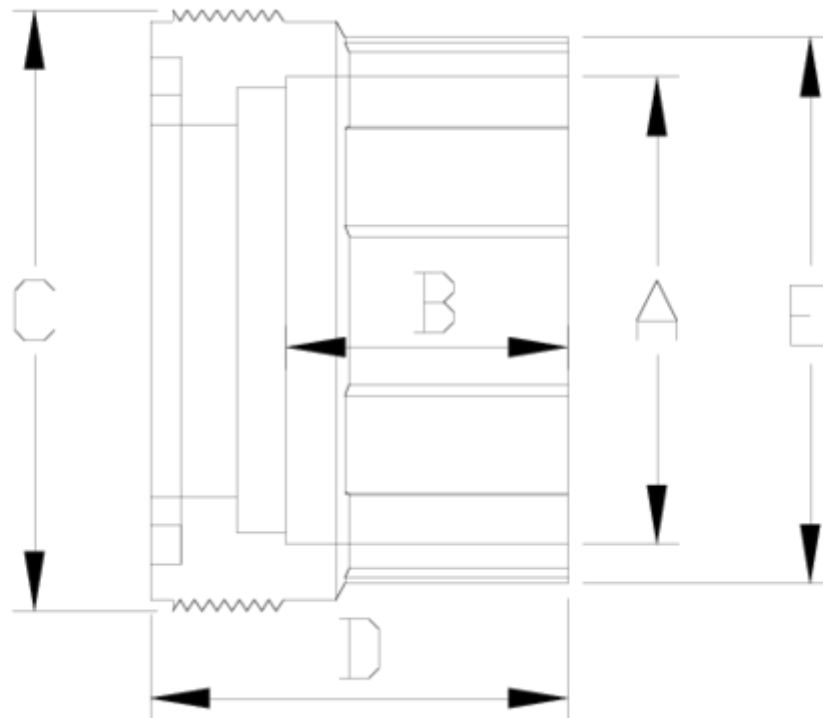
PVC-U pressure fittings

Union adaptor socket solvent

ITEM 084

| REFERENCE | DESCRIPTION | Net weight | Volumen (m ³) | Gross weight | Unidades lote |
|-----------|------------------------------|------------|---------------------------|--------------|---------------|
| 1001925 | UNION ADAPTOR SOC. SOLV. 20 | 0,012 | 0,00473 | 0,35 | 20 |
| 1001926 | UNION ADAPTOR SOC. SOLV. 25 | 0,024545 | 0,00473 | 0,608 | 20 |
| 1001927 | UNION ADAPTOR SOC. SOLV. 32 | 0,03 | 0,00473 | 0,71 | 20 |
| 1001928 | UNION ADAPTOR SOC. SOLV. 40 | 0,061 | 0,00473 | 0,72 | 10 |
| 1001929 | UNION ADAPTOR SOC. SOLV. 50 | 0,06879 | 0,00473 | 0,805 | 10 |
| 1001930 | UNION ADAPTOR SOC. SOLV. 63 | 0,123 | 0,00473 | 1,34 | 10 |
| 1001931 | UNION ADAPTOR SOC. SOLV. 75 | 0,22729 | 0,00473 | 2,39 | 10 |
| 1001932 | UNION ADAPTOR SOC. SOLV. 90 | 0,3903 | 0,01553 | 2,6018 | 6 |
| 1001933 | UNION ADAPTOR SOC. SOLV. 110 | 0,5978 | 0,02244 | 2,8187 | 4 |





ITEM 084 | Union adaptor socket solvent

| Código | A | Peso (g) | B | C | D | E | PN | MEDIDA |
|--------|-----|----------|----|-----|----|-----|------|---------|
| 01925 | 20 | 12 | 16 | 33 | 26 | 28 | PN16 | MÉTRICO |
| 01926 | 25 | 24 | 19 | 42 | 29 | 36 | PN16 | MÉTRICO |
| 01927 | 32 | 30 | 22 | 48 | 32 | 42 | PN16 | MÉTRICO |
| 01928 | 40 | 61 | 26 | 59 | 41 | 52 | PN16 | MÉTRICO |
| 01929 | 50 | 89 | 31 | 66 | 46 | 59 | PN16 | MÉTRICO |
| 01930 | 63 | 123 | 38 | 78 | 56 | 73 | PN16 | MÉTRICO |
| 01931 | 75 | 225 | 44 | 89 | 61 | 85 | PN16 | MÉTRICO |
| 01932 | 90 | 404 | 51 | 122 | 69 | 113 | PN16 | MÉTRICO |
| 01933 | 110 | 602 | 61 | 145 | 79 | 134 | PN16 | MÉTRICO |



Product Documents



Product Certificates



Company Certificates

