

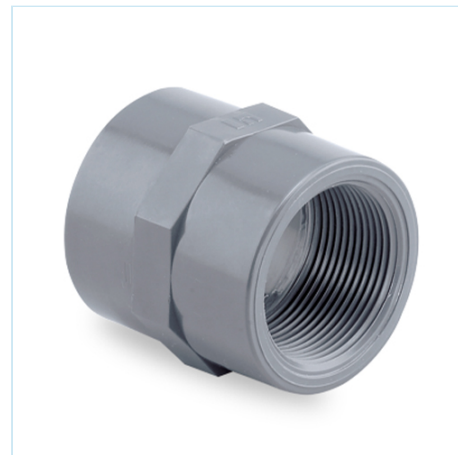


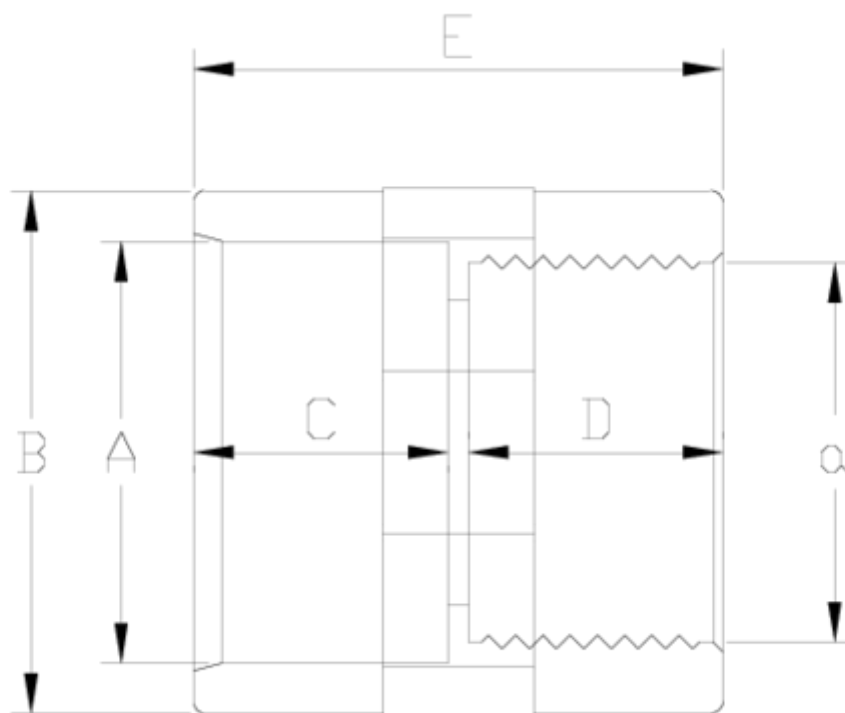
PVC-U pressure fittings

Plain/threaded union coupling

ITEM 014

REFERENCE	DESCRIPTION	Net weight	Volumen (m ³)	Gross weight	Unidades lote
1002010	UNION BUSH 20 1/2"	0,015879	0,00473	1,705	100
1002011	UNION BUSH 25 3/4"	0,022626	0,00892	2,45	100
1002012	UNION BUSH 32-1"	0,03908	0,00892	2,923	70
1002013	UNION BUSH 40 1 1/4"	0,068164	0,02244	5,6	75
1002014	UNION BUSH 50 1 1/2"	0,095058	0,03682	10,055	100
1002015	UNION BUSH 63-2"	0,164443	0,04717	12,975	75
1002016	UNION BUSH 75 2 1/2"	0,222879	0,04717	11,34	48
1002017	UNION BUSH 90-3"	0,410033	0,03129	10,39	24
1002018	UNION BUSH 110-4"	0,561881	0,04460	9,72	16





ITEM 014 | Plain/threaded union coupling

Código	A-a	Peso (g)	B	C	D	E	PN	ROSCA
02010	20-1/2"	16	28	17	16	36	PN10	BSP
02011	25-3/4"	24	34	20	17	41	PN10	BSP
02012	32-1"	40	43	22	22	47	PN10	BSP
02013	40-1 1/4"	66	51	27	23	53	PN10	BSP
02014	50-1 1/2"	100	61	31	23	60	PN10	BSP
02015	63-2"	153	76	38	27	70	PN10	BSP
02016	75-2 1/2"	270	90	44	32	85	PN10	BSP
02017	90-3"	457	110	51	35	100	PN10	BSP
02018	110-4"	615	129	61	39	108	PN10	BSP



Product Documents



Product Certificates



Company Certificates

