



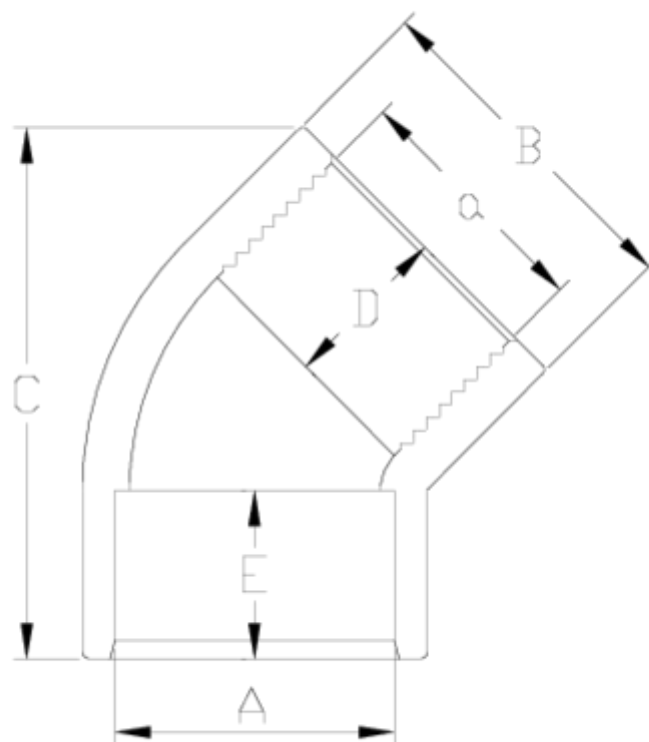
PVC-U pressure fittings

Plain F/T 45° elbow

ITEM 007

| REFERENCE | DESCRIPTION | Net weight | Volumen (m ³) | Gross weight | Unidades lote |
|-----------|---|------------|---------------------------|--------------|---------------|
| 1002211 | 45° ELBOW PLAIN/FEM. THREADED 20-1/2" | 0,016929 | 0,00473 | 1,81 | 100 |
| 1002212 | 45° ELBOW PLAIN/FEM. THREADED 25-3/4" | 0,027576 | 0,00892 | 2,945 | 100 |
| 1002213 | 45° ELBOW PLAIN/FEM. THREADED 32-1" | 0,052583 | 0,01553 | 5,585 | 100 |
| 1002214 | 45° ELBOW PLAIN/FEM. THREADED 40-1 1/4" | 0,093291 | 0,03129 | 10,835 | 110 |
| 1002215 | 45° ELBOW PLAIN/FEM. THREADED 50-1 1/2" | 0,130529 | 0,04717 | 15 | 110 |
| 1002216 | 45° ELBOW PLAIN/FEM. THREADED 63-2" | 0,2416 | 0,04717 | 13,93 | 55 |
| 1002217 | 45° ELBOW PLAIN/FEM. THREADED 75-2 1/2" | 0,356442 | 0,04117 | 12,49 | 33 |
| 1002218 | 45° ELBOW PLAIN/FEM. THREADED 90-3" | 0,682256 | 0,04117 | 11,605 | 16 |





ITEM 007 | Plain F/T 45° elbow

| Código | A-a | Peso (g) | B | C | D | E | PN | ROSCA |
|--------|-----------|----------|-----|-----|----|----|------|-------|
| 02211 | 20-1/2" | 17 | 27 | 48 | 16 | 16 | PN10 | BSP |
| 02212 | 25-3/4" | 28 | 33 | 53 | 19 | 17 | PN10 | BSP |
| 02213 | 32-1" | 52 | 41 | 63 | 22 | 21 | PN10 | BSP |
| 02214 | 40-1 1/4" | 74 | 50 | 80 | 26 | 23 | PN10 | BSP |
| 02215 | 50-1 1/2" | 131 | 61 | 95 | 31 | 24 | PN10 | BSP |
| 02216 | 63-2" | 234 | 75 | 125 | 38 | 28 | PN10 | BSP |
| 02217 | 75-2 1/2" | 358 | 89 | 140 | 45 | 32 | PN10 | BSP |
| 02218 | 90-3" | 638 | 107 | 162 | 51 | 35 | PN10 | BSP |



Product Documents



Product Certificates



Company Certificates

