



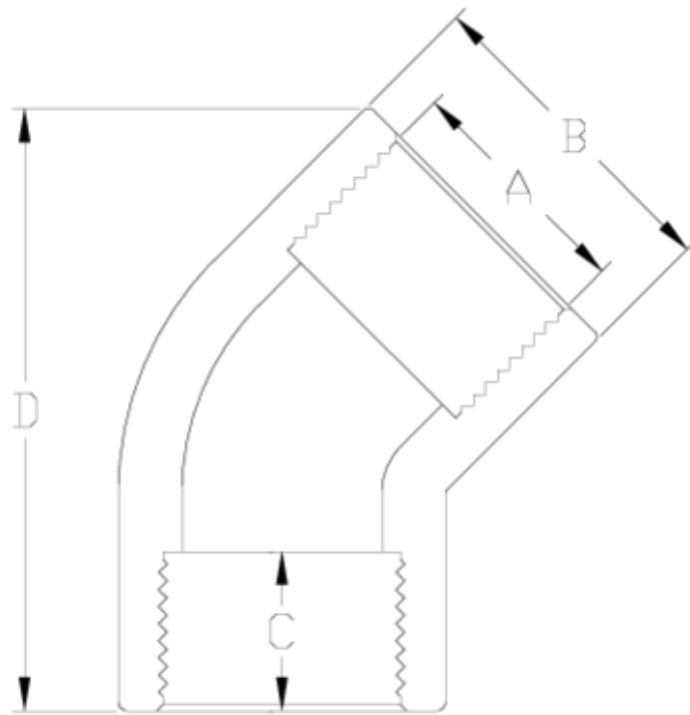
## PVC-U pressure fittings

# F/F threaded 45° elbow

## ITEM 008

| REFERENCE | DESCRIPTION                                 | Net weight | Volumen (m <sup>3</sup> ) | Gross weight | Unidades lote |
|-----------|---|------------|---------------------------|--------------|---------------|
| 1002311   | 45° ELBOW F. THREAD/F. THREAD 1/2"-1/2"     | 0,017779   | 0,00473                   | 1,895        | 100           |
| 1002312   | 45° ELBOW F. THREAD/F. THREAD 3/4"-3/4"     | 0,028056   | 0,00892                   | 2,993        | 100           |
| 1002313   | 45° ELBOW F. THREAD/F. THREAD 1"-1"         | 0,053783   | 0,01553                   | 5,705        | 100           |
| 1002314   | 45° ELBOW F. THREAD/F. THREAD 1 1/4"-1 1/4" | 0,094518   | 0,03129                   | 10,97        | 110           |
| 1002315   | 45° ELBOW F. THREAD/F. THREAD 1 1/2"-1 1/2" | 0,145438   | 0,04717                   | 16,64        | 110           |
| 1002316   | 45° ELBOW F. THREAD/F. THREAD 2"-2"         | 0,274785   | 0,04717                   | 15,755       | 55            |
| 1002317   | 45° ELBOW F. THREAD/F. THREAD 2 1/2"-2 1/2" | 0,391897   | 0,04117                   | 13,66        | 33            |
| 1002318   | 45° ELBOW F. THREAD/F. THREAD 3"-3"         | 0,677881   | 0,04117                   | 11,535       | 16            |





## ITEM 008 | F/F threaded 45° elbow

| Código | A      | Peso (g) | B   | C  | D   | PN   | ROSCA |
|--------|--------|----------|-----|----|-----|------|-------|
| 02311  | 1/2"   | 20       | 27  | 16 | 48  | PN10 | BSP   |
| 02312  | 3/4"   | 27       | 33  | 17 | 53  | PN10 | BSP   |
| 02313  | 1"     | 54       | 41  | 21 | 63  | PN10 | BSP   |
| 02314  | 1 1/4" | 80       | 50  | 23 | 80  | PN10 | BSP   |
| 02315  | 1 1/2" | 156      | 61  | 24 | 95  | PN10 | BSP   |
| 02316  | 2"     | 260      | 76  | 28 | 125 | PN10 | BSP   |
| 02317  | 2 1/2" | 361      | 89  | 32 | 137 | PN10 | BSP   |
| 02318  | 3"     | 676      | 107 | 35 | 162 | PN10 | BSP   |



## Product Documents



## Product Certificates



## Company Certificates

