



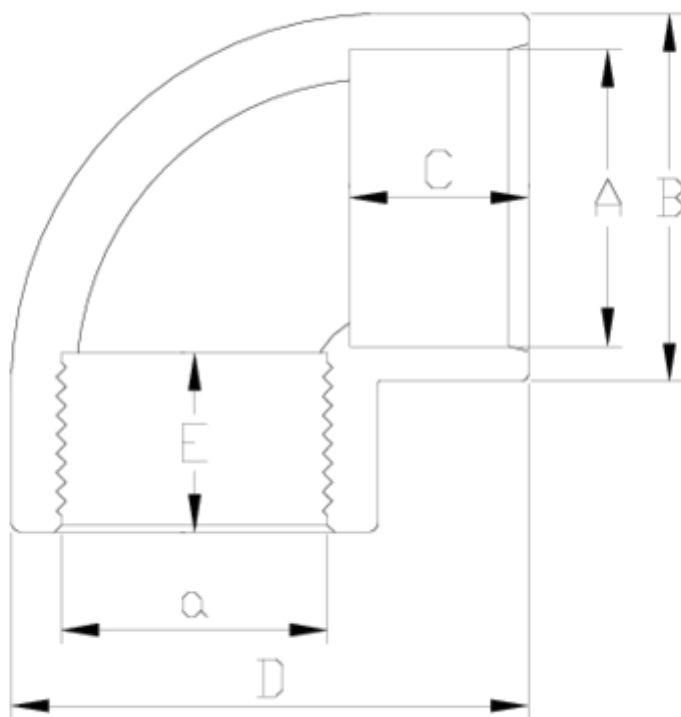
PVC-U pressure fittings

90° elbow, solvent socket outlet

ITEM 004



| REFERENCE | DESCRIPTION | Net weight | Volumen (m ³) | Gross weight | Unidades lote |
|-----------|-------------------------------------|------------|---------------------------|--------------|---------------|
| 1002201 | 90° ELBOW PLAIN/F. THREAD 20-1/2" | 0,021726 | 0,00892 | 2,36 | 100 |
| 1002202 | 90° ELBOW PLAIN/F. THREAD 25-3/4" | 0,033126 | 0,00892 | 3,5 | 100 |
| 1002203 | 90° ELBOW PLAIN/F. THREAD 32-1" | 0,064853 | 0,02244 | 6,973 | 100 |
| 1002204 | 90° ELBOW PLAIN/F. THREAD 40-1 1/4" | 0,12457 | 0,03129 | 13,03 | 100 |
| 1002205 | 90° ELBOW PLAIN/F. THREAD 50-1 1/2" | 0,160832 | 0,06649 | 17,0037 | 100 |
| 1002206 | 90° ELBOW PLAIN/F. THREAD 63-2" | 0,286364 | 0,06649 | 15,2387 | 50 |
| 1002207 | 90° ELBOW PLAIN/F. THREAD 75-2 1/2" | 0,45249 | 0,04880 | 14,15 | 30 |
| 1002208 | 90° ELBOW PLAIN/F. THREAD 90-3" | 0,849439 | 0,04836 | 15,955 | 18 |
| 1002260 | 90° ELBOW PLAIN/F. THREAD 75-1 1/2" | 0,59435 | 0,03129 | 12,46 | 20 |
| 1002261 | 90° ELBOW PLAIN/F. THREAD 75-2" | 0,57235 | 0,03129 | 12,02 | 20 |
| 1002262 | 90° ELBOW PLAIN/F. THREAD 90-2" | 1,073817 | 0,03680 | 13,435 | 12 |
| 1002263 | 90° ELBOW PLAIN/F. THREAD 90-2 1/2" | 0,995 | 0,03680 | 12,56 | 12 |



ITEM 004 | 90° elbow, solvent socket outlet

| Código | A-a | Peso (g) | B | C | D | E | PN | ROSCA |
|--------|-----------|----------|-----|----|-----|----|------|-------|
| 02201 | 20-1/2" | 21 | 27 | 16 | 41 | 16 | PN10 | BSP |
| 02202 | 25-3/4" | 34 | 33 | 19 | 50 | 17 | PN10 | BSP |
| 02203 | 32-1" | 66 | 43 | 22 | 61 | 22 | PN10 | BSP |
| 02204 | 40-1 1/4" | 120 | 50 | 26 | 74 | 23 | PN10 | BSP |
| 02205 | 50-1 1/2" | 145 | 61 | 31 | 88 | 24 | PN10 | BSP |
| 02206 | 63-2" | 275 | 75 | 38 | 109 | 28 | PN10 | BSP |
| 02260 | 75-1 1/2" | 589 | 89 | 44 | 129 | 24 | PN10 | BSP |
| 02261 | 75-2" | 562 | 89 | 44 | 129 | 28 | PN10 | BSP |
| 02207 | 75-2 1/2" | 427 | 89 | 44 | 129 | 32 | PN10 | BSP |
| 02262 | 90-2" | 1040 | 108 | 51 | 156 | 28 | PN10 | BSP |



ITEM 004 | 90° elbow, solvent socket outlet

| | | | | | | | | |
|-------|-----------|-----|-----|----|-----|----|-------------|-----|
| 02263 | 90-2 1/2" | 995 | 108 | 51 | 156 | 32 | PN10 | BSP |
| 02208 | 90-3" | 831 | 108 | 51 | 156 | 35 | PN10 | BSP |



Product Documents



Product Certificates



Company Certificates

