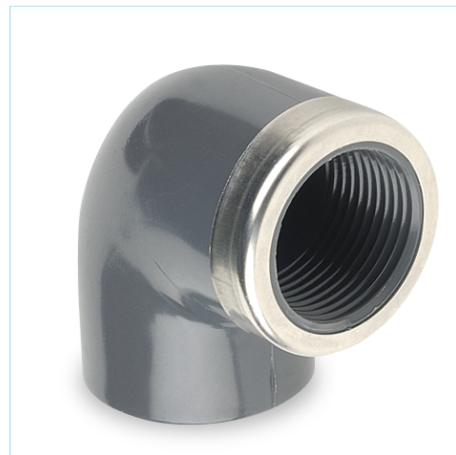




## PVC-U pressure fittings

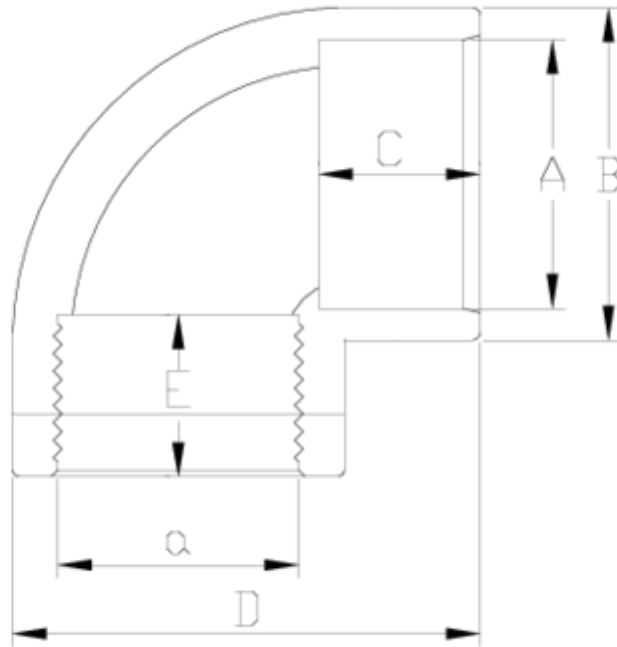
# 90° elbow, reinforced female threaded outlet 1

## ITEM 433



REFERENCE	DESCRIPTION	Net weight	Volumen (m <sup>3</sup> )	Gross weight	Unidades lote
1002061	90° ELBOW PLAIN/F. THREADED REINF. 75-1 1/2"	0,624	0,03129	12,48	20
1002062	90° ELBOW PLAIN/F. THREADED REINF. 75-2"	0,5804	0,03129	11,608	20
1002063	90° ELBOW PLAIN/F. THREADED REINF. 90-2"	0,91	0,03680	11,608	12
1002064	90° ELBOW PLAIN/F. THREADED REINF. 90-2 1/2"	1,02	0,03680	12,92	12
1002160	90° ELBOW PLAIN/F. THREADED REINF. 20-1/2"	0,024726	0,00892	2,66	100
1002161	90° ELBOW PLAIN/F. THREADED REINF. 25-3/4"	0,03881	0,02243	4,3687	100
1002162	90° ELBOW PLAIN/F. THREADED REINF. 32-1"	0,07	0,02244	7,823	100
1002163	90° ELBOW PLAIN/F. THREADED REINF. 40-1 1/4"	0,12677	0,03129	13,25	100
1002164	90° ELBOW PLAIN/F. THREADED REINF. 50-1 1/2"	0,173232	0,04717	17,965	100
1002165	90° ELBOW PLAIN/F. THREADED REINF. 63-2"	0,3093	0,04879	16,0403	50
1002166	90° ELBOW PLAIN/F. THREADED REINF. 75-2 1/2"	0,45749	0,04880	14,3	30
1002167	90° ELBOW PLAIN/F. THREADED REINF. 90-3"	0,8758	0,04836	16,43	18





## ITEM 433 | 90° elbow, reinforced female threaded outlet 1

Código	A-a	Peso (g)	B	C	D	E	PN	ROSCA
02160	20-1/2"	32	27	16	41	16	PN10	BSP
02161	25-3/4"	45	33	19	50	17	PN10	BSP
02162	32-1"	79	41	22	61	21	PN10	BSP
02163	40-1 1/4"	134	50	26	74	23	PN10	BSP
02164	50-1 1/2"	163	61	31	88	24	PN10	BSP
02165	63-2"	296	75	38	109	28	PN10	BSP
02061	75-1 1/2"	614	89	44	129	24	PN10	BSP
02062	75-2"	589	89	44	129	28	PN10	BSP
02166	75-2 1/2"	452	89	44	129	32	PN10	BSP
02063	90-2"	1070	108	51	156	28	PN10	BSP





## ITEM 433 | 90° elbow, reinforced female threaded outlet 1

02064	90-2 1/2"	1025	108	51	156	32	<b>PN10</b>	BSP
02167	90-3"	861	108	51	156	35	<b>PN10</b>	BSP



## Product Documents



## Product Certificates



## Company Certificates

