

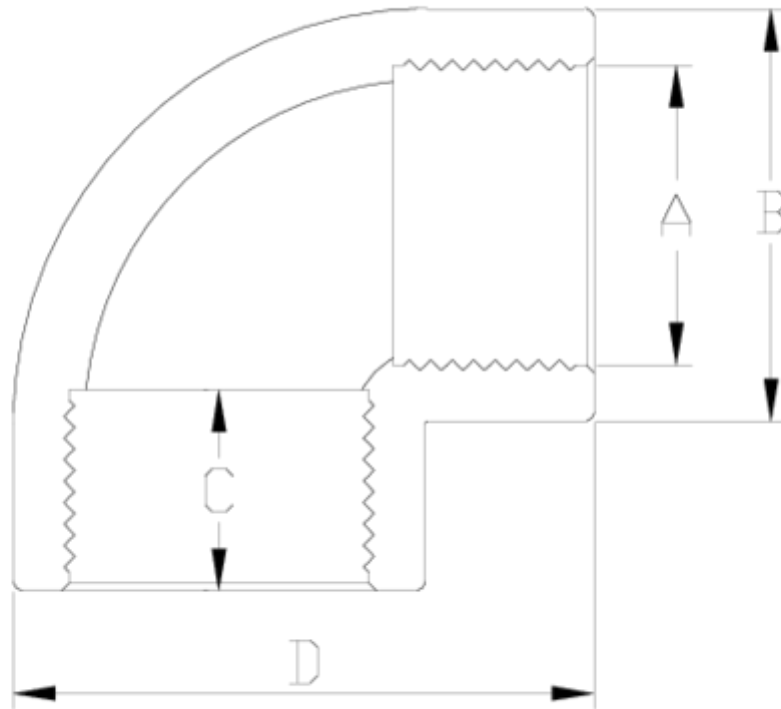


PVC-U pressure fittings

90° elbow, F/F threaded outlet ITEM 005

REFERENCE	DESCRIPTION	Net weight	Volumen (m ³)	Gross weight	Unidades lote
1002301	90° ELBOW F. THREAD/F. THREAD 1/2"-1/2"	0,022666	0,00473	2,454	100
1002302	90° ELBOW F. THREAD/F. THREAD 3/4"-3/4"	0,034576	0,00892	3,645	100
1002303	90° ELBOW F. THREAD/F. THREAD 1"-1"	0,066173	0,02244	7,105	100
1002304	90° ELBOW F. THREAD/F. THREAD 1 1/4"-1 1/4"	0,11547	0,03129	12,12	100
1002305	90° ELBOW F. THREAD/F. THREAD 1 1/2"-1 1/2"	0,179582	0,06649	18,7787	100
1002306	90° ELBOW F. THREAD/F. THREAD 2"-2"	0,327164	0,06649	17,2787	50
1002307	90° ELBOW F. THREAD/F. THREAD 2 1/2"-2 1/2"	0,456257	0,04880	14,35	30
1002308	90° ELBOW F. THREAD/F. THREAD 3"-3"	0,889161	0,04836	16,67	18





ITEM 005 | 90° elbow, F/F trheaded outlet

Código	A	Peso (g)	B	C	D	PN	ROSCA
02301	1/2"	22	27	16	41	PN10	BSP
02302	3/4"	34	33	17	50	PN10	BSP
02303	1"	66	41	21	61	PN10	BSP
02304	1 1/4"	97	50	23	74	PN10	BSP
02305	1 1/2"	165	61	24	88	PN10	BSP
02306	2"	322	76	28	109	PN10	BSP
02307	2 1/2"	441	89	32	128	PN10	BSP
02308	3"	864	107	35	155	PN10	BSP



Product Documents



Product Certificates



Company Certificates

