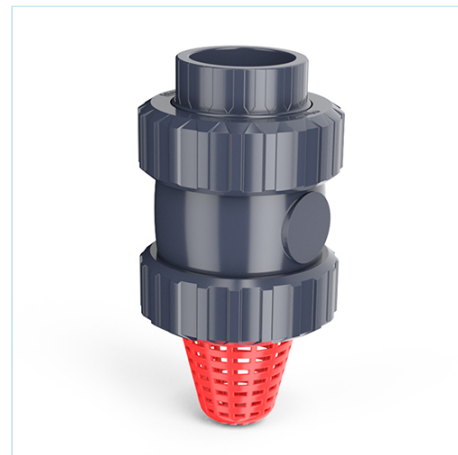




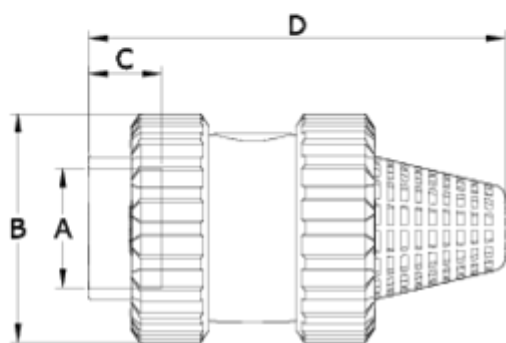
## PVC check valves (with spring)

# Solvent socket - Foot - EPDM seal

## ITEM 272



REFERENCE	DESCRIPTION	Net weight	Volumen (m <sup>3</sup> )	Gross weight	Unidades lote
1016101	PVC FOOT CHECK V. (W/SPRING) S. SOCK 20	0,128	0,01553	5,45	40
1016102	PVC FOOT CHECK V. (W/SPRING) S. SOCK 25	0,163	0,02244	6,84	40
1016103	PVC FOOT CHECK V. (W/SPRING) S. SOCK 32	0,2735	0,02244	8,524	30
1016104	PVC FOOT CHECK V. (W/SPRING) S. SOCK 40	0,445	0,03129	9,47	20
1016105	PVC FOOT CHECK V. (W/SPRING) S. SOCK 50	0,6485	0,02244	7,984	12
1016106	PVC FOOT CHECK V. (W/SPRING) S. SOCK 63	1,0824	0,04836	13,08	12
1016107	PVC FOOT CHECK V. (W/SPRING) S. SOCK 75	2,092	0,03129	8,995	4
1016108	PVC FOOT CHECK V. (W/SPRING) S. SOCK 90	3,276	0,03129	7,345	2
1016179	PVC FOOT CHECK V. (W/SPRING) S. SOCK 90-110	3,5418	0,03129	7,6566	2



## ITEM 272 | Solvent socket - Foot - EPDM seal

Código EPDM	A	Peso	B	C	D	PN	MEDIDA
16101	20	123	52	17	104	PN16	MÉTRICO
16102	25	160	59	19	116	PN16	MÉTRICO
16103	32	266	69	24	145	PN16	MÉTRICO
16104	40	435	85	26	163	PN16	MÉTRICO
16105	50	650	99	31	173	PN16	MÉTRICO
16106	63	1000	116	38	206	PN16	MÉTRICO
16107	75	2500	150	44	269	PN10	MÉTRICO
16108	90	4000	178	51	312	PN10	MÉTRICO
16179	110	4235	178	61	325	PN10	MÉTRICO



## Product Documents



## Product Certificates

## Company Certificates

