



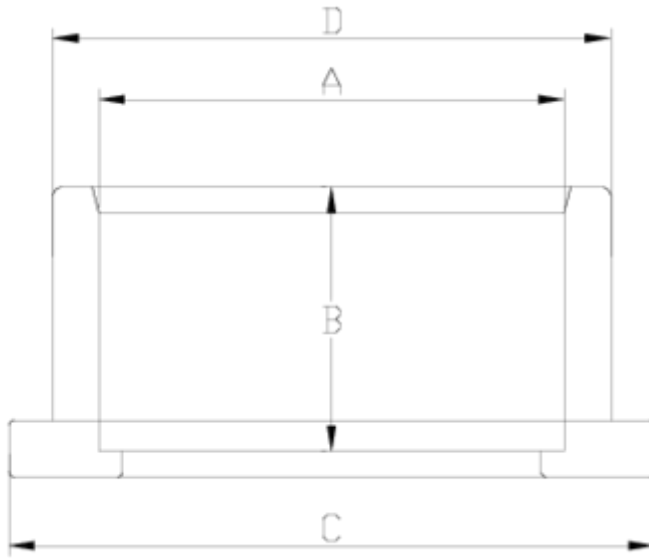
## Flanges and adaptors

# Plain adaptor ANSI

## ITEM 954

REFERENCE	DESCRIPTION	Net weight	Volumen (m <sup>3</sup> )	Gross weight	Unidades lote
1010410	ANSI FLANGE ADAPTOR Ø 1 1/2"	0,063	0,00891	3,2114	48
1010411	ANSI FLANGE ADAPTOR Ø 2"	0,120061	0,02243	5,05	38
1010412	ANSI FLANGE ADAPTOR Ø 2 1/2"	0,21018	0,03129	8,98	40
1010413	ANSI FLANGE ADAPTOR Ø 3"	0,315219	0,03682	10,637	32
1010414	ANSI FLANGE ADAPTOR Ø 4"	0,484039	0,06347	14,34	28
1010415	ANSI FLANGE ADAPTOR Ø 5"	0,597	0,08677	12,9617	20
1010416	ANSI FLANGE ADAPTOR Ø 6"	1,0194	0,04581	10,836	10
1010417	ANSI FLANGE ADAPTOR Ø 8"	2,2533	0,01553	2,58	1







## Product Documents



## Product Certificates



## Company Certificates

