

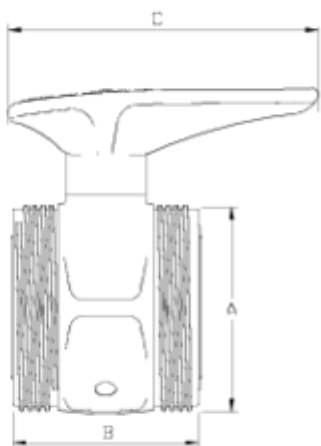


## Spare parts

# PE main body basic ball valve ITEM 237

REFERENCE	DESCRIPTION	Net weight	Volumen (m <sup>3</sup> )	Gross weight	Unidades lote
1011627	PE MAIN BODY, BALL VALVE 110	3,3	0,02244	7,14	2
1011701	PE MAIN BODY, BALL VALVE 20	0,085087	0,00892	2,74	30
1011702	PE MAIN BODY, BALL VALVE 25	0,10038	0,00892	2,195	20
1011703	PE MAIN BODY, BALL VALVE 32	0,20731	0,01553	6,546	30
1011704	PE MAIN BODY, BALL VALVE 40	0,3685	0,01553	5,485	14
1011705	PE MAIN BODY, BALL VALVE 50	0,456	0,01553	7,17	15
1011706	PE MAIN BODY, BALL VALVE 63	0,716858	0,02244	9,09	12
1011707	PE MAIN BODY, BALL VALVE 75	1,587575	0,01553	6,677	4
1011708	PE MAIN BODY, BALL VALVE 90	2,40925	0,03129	10,21	4





## ITEM 237 | PE main body basic ball valve

CÓDIGO	f tubo	PESO (g)	DN	A	B	C	PN	MEDIDA
11701	20	83	15	42	44	73	PN16	MÉTRICO
11702	25	101	20	47	49	73	PN16	MÉTRICO
11703	32	199	25	57	66	110	PN16	MÉTRICO
11704	40	324	32	71	71	120	PN16	MÉTRICO
11705	50	422	40	83	75	120	PN16	MÉTRICO
11706	63	700	50	98	89	178	PN16	MÉTRICO
11707	75	1491	50	127	119	260	PN10	MÉTRICO
11708	90	2249	65	151	140	260	PN10	MÉTRICO
11627	110	3300	100	180	155	280	PN10	MÉTRICO



## Product Documents



## Product Certificates

## Company Certificates

