



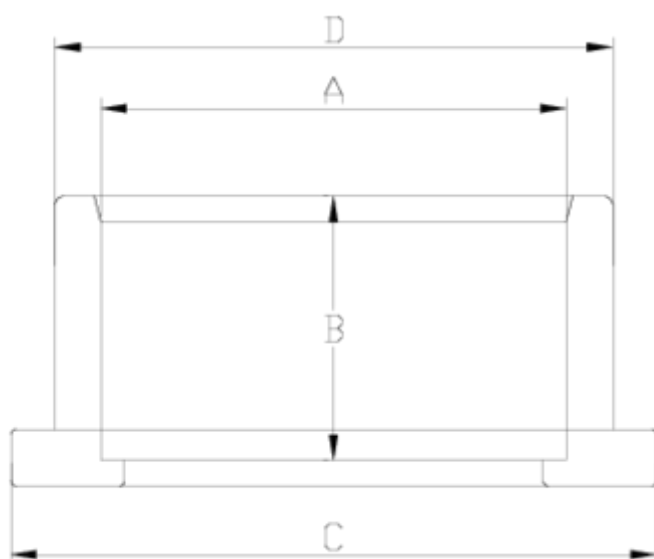
Flanges and adaptors

PVC Plain adaptor

ITEM 072

REFERENCE	DESCRIPTION	Net weight	Volumen (m ³)	Gross weight	Unidades lote
1010130	PVC FLANGE ADAPTOR Ø50 PN-16	0,062666	0,01553	3,46	50
1010131	PVC FLANGE ADAPTOR Ø63 PN-16	0,107034	0,02244	4,555	38
1010132	PVC FLANGE ADAPTOR Ø75 PN-16	0,1918	0,03129	8,245	40
1010133	PVC FLANGE ADAPTOR Ø90 PN-16	0,286203	0,03129	9,775	32
1010134	PVC FLANGE ADAPTOR Ø110 PN-16	0,525111	0,06347	15,49	28
1010135	PVC FLANGE ADAPTOR Ø125 PN-16	0,645546	0,06347	16,28	24
1010136	PVC FLANGE ADAPTOR Ø140 PN-16	0,920665	0,06149	19,3338	20
1010137	PVC FLANGE ADAPTOR Ø160 PN-10	1,27182	0,06347	13,36	10
1010138	PVC FLANGE ADAPTOR Ø200 PN-6	1,625643	0,06150	12,3	7
1010139	PVC FLANGE ADAPTOR Ø225 PN-10	1,8433	0,01553	2,17	1
1010140	PVC FLANGE ADAPTOR Ø250 PN-10	3,334	0,03682	3,907	1
1010141	PVC FLANGE ADAPTOR Ø315 PN-10	4,6766	0,04117	5,317	1
1010143	PVC FLANGE ADAPTOR Ø200 PN-10	1,8635	0,06150	13,965	7
1010146	PVC FLANGE ADAPTOR Ø355	5,89	0,06347	6,72	1
1010144	PVC FLANGE ADAPTOR Ø400	9	0,00000	9	1





ITEM 072 | PVC Plain adaptor

Código	A	Peso (g)	B	C	D	PN	MEDIDA
10130	50	62	31	73	61	PN16	MÉTRICO
10131	63	107	38	90	76	PN16	MÉTRICO
10132	75	196	44	109	90	PN16	MÉTRICO
10133	90	286	51	125	108	PN16	MÉTRICO
10134	110	525	61	160	132	PN16	MÉTRICO
10135	125	645	71	168	147	PN16	MÉTRICO
10136	140	920	76	188	165	PN16	MÉTRICO
10137	160	1272	86	213	189	PN10	MÉTRICO
10138	200	1625	100	247	225	PN6	MÉTRICO
10143	200-PN10	1601	106	261	235	PN10	MÉTRICO

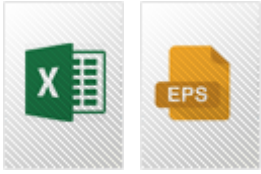


ITEM 072 | PVC Plain adaptor

10139	225	1843	127	274	248	PN10	MÉTRICO
10140	250	3340	131	328	281	PN10	MÉTRICO
10141	315	4676	164	378	348	PN10	MÉTRICO
10146	355	5890	184	430	384	PN6	MÉTRICO
10144	400	9000	220	485	438	PN6	MÉTRICO



Product Documents



Product Certificates



Company Certificates

