



Flanges and adaptors

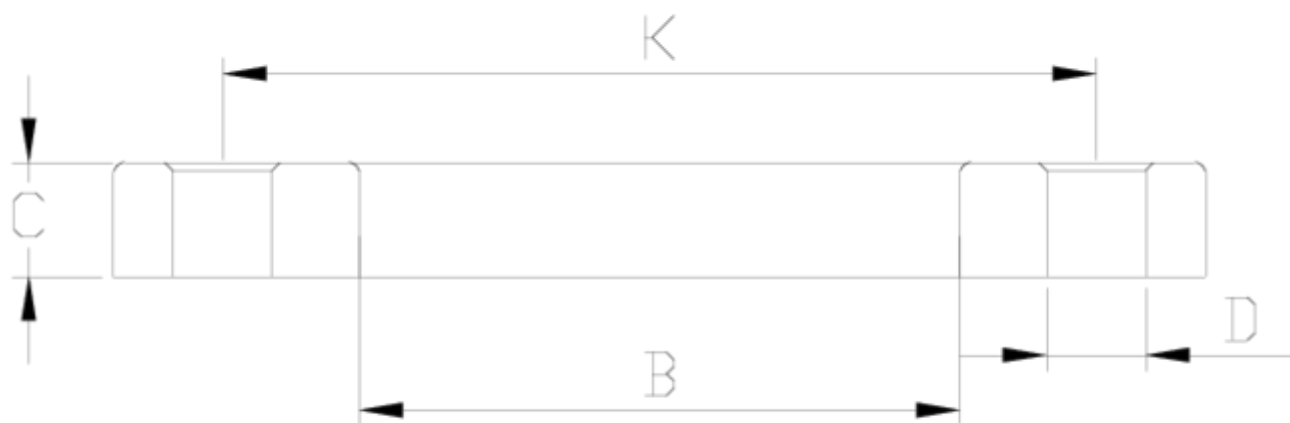
Galvanized steel plain flange covered by PP

ITEM 411



REFERENCE	DESCRIPTION	Net weight	Volumen (m ³)	Gross weight	Unidades lote
110P531	PP-RCT+GALVANIZED STEEL PLAIN FLANGE 140X125	1,7544	0,01234	9,02	5
1010527	PP+GALVANIZED STEEL PLAIN FLANGE 75	1,105	0,00708	5,7661	5
1010528	PP+GALVANIZED STEEL PLAIN FLANGE 90	1,345	0,00708	6,9661	5
1010529	PP+GALVANIZED STEEL PLAIN FLANGE 110	1,66	0,00708	8,5411	5
1010530	PP+GALVANIZED STEEL PLAIN FLANGE 125	1,47	0,01234	11,273	5
1010531	PP+GALVANIZED STEEL PLAIN FLANGE 140	2,275	0,01234	11,623	5
1010532	PP+GALVANIZED STEEL PLAIN FLANGE 160	2,6104	0,01234	13,3	5
1010533	PP+GALVANIZED STEEL PLAIN FLANGE 200	2,69	0,01234	3,795	1
1010534	PP+GALVANIZED STEEL PLAIN FLANGE 225	3,1762	0,03682	3,1762	1
1010535	PP+GALVANIZED STEEL PLAIN FLANGE 250	2,225	0,00000	2,225	1
1010536	PP+GALVANIZED STEEL PLAIN FLANGE 315	7,335	0,00000	7,335	1





ITEM 411 | Galvanized steel plain flange covered by PP

Código	f	Peso (g)	B	K	C	D	PN	MEDIDA
10526	63	1525	78	125	18	4x18	PN16	MÉTRICO
10527	75	2002	92	145	19	4x18	PN16	MÉTRICO
10528	90	1984.32	110	160	20	4x18	PN16	MÉTRICO
10529	110	2278.64	132	180	21	8x18	PN16	MÉTRICO
10530	125	3192.8	149	180	23	8x18	PN16	MÉTRICO
10531	140	2450.24	167	210	26	8x18	PN16	MÉTRICO
10532	160	3276	190	240	28	8x22	PN10	MÉTRICO
10533	200	5820	235	295	34	8x22	PN10	MÉTRICO
10534	225	5437.12	252	295	34	8x22	PN10	MÉTRICO
10535	250	6327.36	282	350	34	12x22	PN10	MÉTRICO



ITEM 411 | Galvanized steel plain flange covered by PP

10536

315

6801.6

348

400

34

12x22

PN10

MÉTRICO



Product Documents



Product Certificates



Company Certificates

