

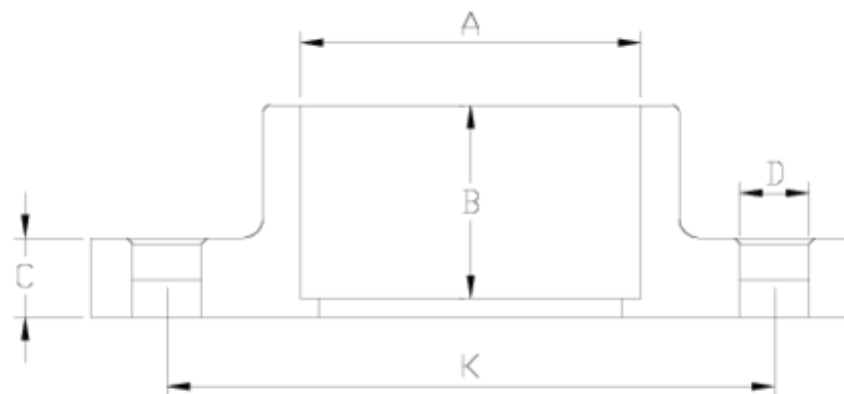


## Flanges and adaptors

# Compact flange, solvent socket outlet ITEM 070



REFERENCE	DESCRIPTION	Net weight	Volumen (m <sup>3</sup> )	Gross weight	Unidades lote
1010045	PVC COMPACT FLANGE,SOLV.S.50	0,319425	0,03129	13,35	40
1010046	PVC COMPACT FLANGE,SOLV.S.63	0,430194	0,03682	16,0362	36
1010047	PVC COMPACT FLANGE,SOLV.S.75	0,553942	0,04117	13,935	24
1010048	PVC COMPACT FLANGE,SOLV.S.90	0,744375	0,06150	21,763	28
1010049	PVC COMPACT FLANGE,SOLV.S.110	1,0762	0,04880	17,795	16
1010050	PVC COMPACT FLANGE,SOLV.S.125	1,212694	0,06347	20,19	16
1010051	PVC COMPACT FLANGE,SOLV.S.140	1,50295	0,06150	15,95	10
1010052	PVC COMPACT FLANGE,SOLV.S.160	2,151788	0,06879	17,808	8



## ITEM 070 | Compact flange, solvent socket outlet

Código	A	Peso (g)	B	K	C	D	PN	MEDIDA
10045	50	340	31	110	18	4x18	PN16	MÉTRICO
10046	63	408	38	125	18	4x18	PN16	MÉTRICO
10047	75	544	45	145	19	4x18	PN16	MÉTRICO
10048	90	716	51	146-160	21	8x18	PN16	MÉTRICO
10049	110	977	61	178-190	23	8x18	PN16	MÉTRICO
10050	125	1160	69	190	24	8x18	PN16	MÉTRICO
10051	140	1467	76	210-216	27	8x18	PN16	MÉTRICO
10052	160	2050	86	235-241	28	8x22	PN10	MÉTRICO



## Product Documents



## Product Certificates



## Company Certificates

