



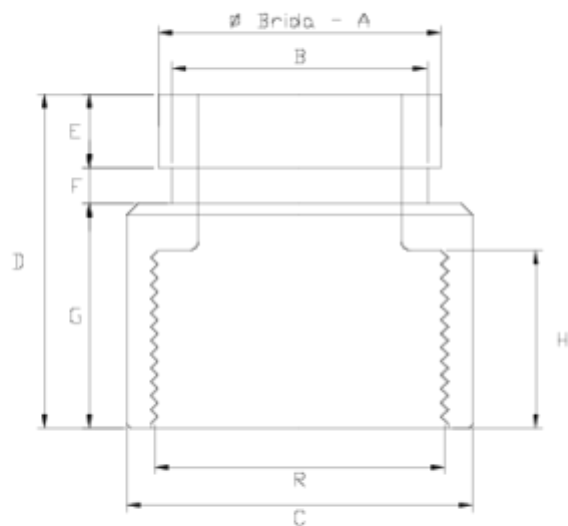
## Netvitc® coupling

# Female threaded outlet

## ITEM 085

REFERENCE	DESCRIPTION	Net weight	Volumen (m <sup>3</sup> )	Gross weight	Unidades lote
110N006	NETVITC SOCKET FEMALE THR. 1 1/2"	0,11463	0,00892	2,48	20
110N007	NETVITC COUPLING FEMALE THREAD 2"	0,17563	0,00892	3,7	20
110N008	NETVITC COUPLING FEMALE THREAD 2 1/2"	0,22463	0,01553	4,68	20
110N009	NETVITC COUPLING FEMALE THREAD 3"	0,432365	0,02457	9,21	20
110N010	NETVITC COUPLING FEMALE THREAD 4"	0,6432	0,03129	7,005	10





## ITEM 085 | Female threaded outlet

CÓDIGO	f BRIDA- A	R	PESO (g)	B	C	D	E	F	G	H	PN	MEDIDA
10n06	1 1/2"	1 1/2"	96	45	63	66	16	8	40	31	PN10	BSP
10n07	2"	2"	169	56	75	72	16	8	48	34	PN10	BSP
10n08	2 1/2"	2 1/2"	240	72	90	76	16	8	52	38	PN10	BSP
10n09	3"	3"	335	83	110	88	16	11	62	46	PN10	BSP
10n10	4"	4"	630	110	131	105	16	11	77	43	PN10	BSP



## Product Documents



## Product Certificates

## Company Certificates

