



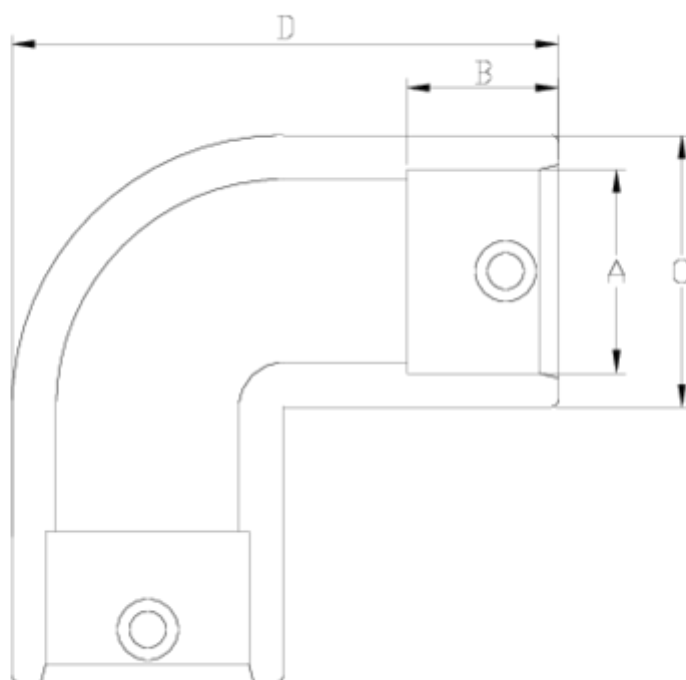
## Electrofusion fittings/Welding fittings

# Electrofusion 90° elbow

## ITEM 160

REFERENCE	DESCRIPTION	Net weight	Volumen (m <sup>3</sup> )	Gross weight	Unidades lote
1019003	90° ELECTROFUSION ELBOW 32	0,09826	0,00892	1,17	10
1019004	90° ELECTROFUSION ELBOW 40	0,11826	0,00892	1,37	10
1019005	90° ELECTROFUSION ELBOW 50	0,17383	0,01553	2,065	10
1019006	90° ELECTROFUSION ELBOW 63	0,30673	0,02244	3,555	10
1019007	90° ELECTROFUSION ELBOW 75	0,54775	0,03129	4,955	8
1019008	90° ELECTROFUSION ELBOW 90	0,66665	0,04879	6	8
1019009	90° ELECTROFUSION ELBOW 110	1,169138	0,06347	10,14	8
1019010	90° ELECTROFUSION ELBOW 125	1,621	0,06347	10,59	6
1019012	90° ELECTROFUSION ELBOW 160	3,982075	0,08843	16,95	4





## ITEM 160 | Electrofusion 90° elbow

Código	f tubo-A	Peso (g)	B	C	D	PN	MEDIDA
19003	32	98	35	45	80	PN16	MÉTRICO
19004	40	142	41	55	96	PN16	MÉTRICO
19005	50	215	47	67	111	PN16	MÉTRICO
19006	63	280	53	84	130	PN16	MÉTRICO
19007	75	530	48	97	140	PN16	MÉTRICO
19008	90	822	67	120	182	PN16	MÉTRICO
19009	110	1190	80	139	210	PN16	MÉTRICO
19010	125	1829	85	158	231	PN16	MÉTRICO
19012	160	3433	86	200	322	PN16	MÉTRICO



## Product Documents



## Product Certificates

## Company Certificates

