



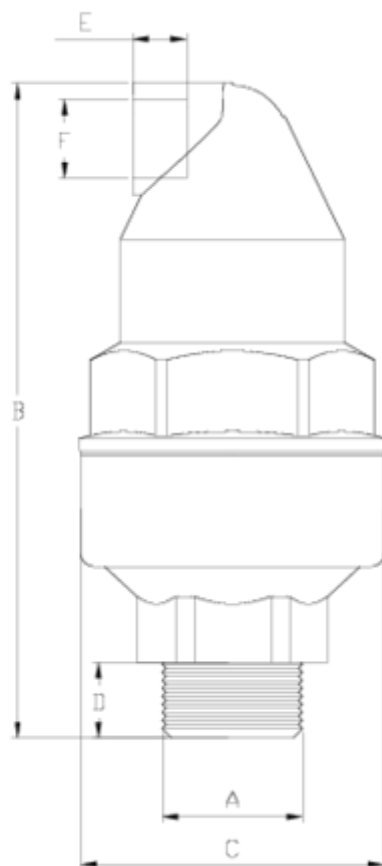
Net air release valve

Double effect (C1) PPFV

ITEM 306

| REFERENCE | DESCRIPTION | Net weight | Volumen (m ³) | Gross weight | Unidades lote |
|-----------|------------------------------------|------------|---------------------------|--------------|---------------|
| 1017003 | NET® AIR VALVE 1" PP DOUBLE EFFECT | 0,282865 | 0,02244 | 6,145 | 20 |





ITEM 306 | Double effect (C1) PPFV

| Código | f A | Peso (g) | B | C | D | E | F | Material | PN | TIPO ROSCA |
|--------|------|----------|-----|----|----|----|------|----------|------|------------|
| 17001 | 1/2" | 256.5 | 158 | 75 | 14 | 15 | 1/2" | PPFV | PN16 | BSP |
| 17002 | 3/4" | 260.1 | 160 | 75 | 16 | 15 | 1/2" | PPFV | PN16 | BSP |
| 17003 | 1" | 265.5 | 163 | 75 | 19 | 15 | 1/2" | PPFV | PN16 | BSP |
| 17501 | 1/2" | 281.2 | 158 | 75 | 14 | 15 | 1/2" | PA | PN25 | BSP |
| 17502 | 3/4" | 285.95 | 160 | 75 | 16 | 15 | 1/2" | PA | PN25 | BSP |
| 17503 | 1" | 291.65 | 163 | 75 | 19 | 15 | 1/2" | PA | PN25 | BSP |



Product Documents



Product Certificates

Company Certificates

