



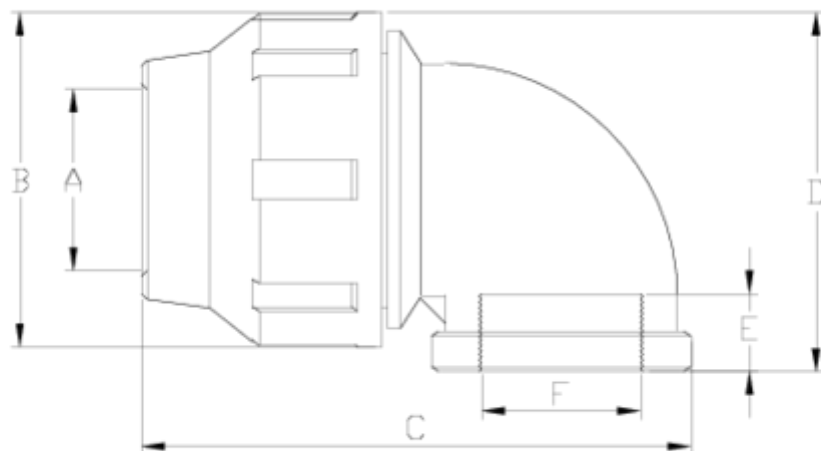
## PP compression fittings

# Reinforced 90° elbow, female threaded

## ITEM 483



REFERENCE	DESCRIPTION	Net weight	Volumen (m <sup>3</sup> )	Gross weight	Unidades lote
112E129	90° ELBOW,F. THR. REINF. 20-1/2" GREY	0,065541	0,02243	5,731	80
112E130	90° ELBOW,F. THR. REINF. 25-3/4" GREY	0,094838	0,03129	8,16	80
112E131	90° ELBOW,F. THR. REINF. 32-1" GREY	0,132763	0,04117	9,27	65
112E132	90° ELBOW,F. THR. REINF. 40-1 1/4" GREY	0,235	0,03682	10,02	40
112E133	90° ELBOW,F. THR. REINF. 50-1 1/2" GREY	0,348	0,06347	14,68	40
112E134	90° ELBOW,F. THR. REINF. 63-2" GREY	0,596	0,06347	15,204	24
112E135	90° ELBOW,F. THR. REINF. 75-2 1/2" GREY	0,992	0,04460	10,75	10
112E136	90° ELBOW,F. THR. REINF. 90-3" GREY	1,74	0,03129	9,26	5
112E137	90° ELBOW,F. THR. REINF. 110-4" GREY	2,423	0,02244	5,386	2
112E384	CODO 90° R/HEMBRA REF. 32-3/4" GRIS	0	0,03129	0	65



## ITEM 483 | Reinforced 90° elbow, female threaded

Código	f tubo - F	Peso (g)	A	B	C	D	E	PN	TIPO ROSCA
12E129	20 - 1/2"	64	21	46	87	57	20	PN16	BSP
12E130	25 - 3/4"	89	26	55	97	65	20	PN16	BSP
12E384	32 - 3/4"	132	33	64	111	76	20	PN16	BSP
12E131	32 - 1"	128	33	64	111	76	22	PN16	BSP
12E132	40 - 1 1/4"	235	42	76	138	91	25	PN16	BSP
12E133	50 - 1 1/2"	348	51	91	153	106	25	PN16	BSP
12E134	63 - 2"	596	64	109	189	120	29	PN16	BSP
12E135	75 - 2 1/2"	992	77	133	220	142	34	PN10	BSP
12E136	90 - 3"	1740	92	159	267	165	42	PN10	BSP
12E137	110 - 4"	2423	112	183	303	201	51	PN10	BSP



## ITEM 483 | Reinforced 90° elbow, female threaded

---



## Product Documents



## Product Certificates

## Company Certificates

