



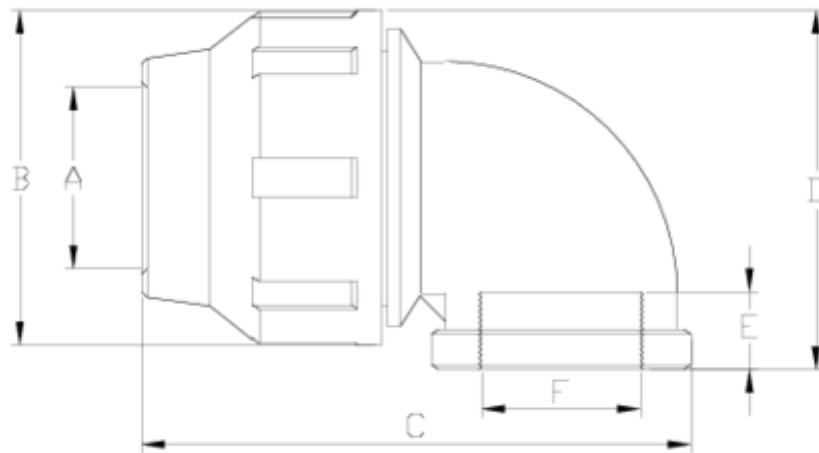
PP compression fittings

90° elbow, female threaded

ITEM 482

REFERENCE	DESCRIPTION	Net weight	Volumen (m ³)	Gross weight	Unidades lote
112E066	90° ELBOW, F. THREAD 20-1/2" GREY	0,055	0,02243	4,801	80
112E067	90° ELBOW, F. THREAD 25-3/4" GREY	0,083	0,03129	7,18	80
112E068	90° ELBOW, F. THREAD 32-1" GREY	0,122	0,03129	8,759	65
112E069	90° ELBOW, F. THREAD 40-1 1/4" GREY	0,226	0,03682	9,66	40
112E070	90° ELBOW, F. THREAD 50-1 1/2" GREY	0,336	0,06347	14,478	40
112E071	90° ELBOW, F. THREAD 63-2" GREY	0,609	0,06347	15,516	24
112E374	CODO 90° R/HEMBRA 32-3/4" GRIS	0	0,03129	0	65





ITEM 482 | 90° elbow, female threaded

Código	f tubo - F	Peso (g)	A	B	C	D	E	PN	TIPO ROSCA
12E066	20 - 1/2"	54	21	46	87	57	20	PN16	BSP
12E067	25 - 3/4"	92	26	55	97	65	20	PN16	BSP
12E374	32 - 3/4"	127	33	64	111	76	20	PN16	BSP
12E068	32 - 1"	123	33	64	111	76	22	PN16	BSP
12E069	40 - 1 1/4"	217	42	76	138	91	25	PN16	BSP
12E070	50 - 1 1/2"	324	51	91	153	106	25	PN16	BSP
12E071	63 - 2"	561	64	109	189	120	29	PN16	BSP
12E135	75 - 2 1/2"	992	77	133	220	142	34	PN10	BSP
12E136	90 - 3"	1740	92	159	267	165	42	PN10	BSP
12E137	110 - 4"	2423	112	183	303	201	51	PN10	BSP



ITEM 482 | 90° elbow, female threaded



Product Documents



Product Certificates

Company Certificates

