



## Clamp saddles

# Reinforced double clamp saddle 6 screws

## ITEM 134



REFERENCE	DESCRIPTION	Net weight	Volumen (m <sup>3</sup> )	Gross weight	Unidades lote
1003130	PP DOUBLE CLAMP SADDLE REINF. 160-1/2"	1,188	0,06150	19,988	16
1003134	PP DOUBLE CLAMP SADDLE REINF. 160-3/4"	1,1786	0,06150	19,8378	16
1003138	PP DOUBLE CLAMP SADDLE REINF. 140-1/2"	1,076	0,06150	18,1992	16
1003142	PP DOUBLE CLAMP SADDLE REINF. 140-3/4"	1,082	0,06150	17,882	16
1003339	PP DOUBLE CLAMP SADDLE REINF. 140-1"	1,060594	0,06150	17,93	16
1003340	PP DOUBLE CLAMP SADDLE REINF. 140-1 1/4"	1,131	0,06150	19,06	16
1003341	PP DOUBLE CLAMP SADDLE REINF. 140-1 1/2"	1,119344	0,06150	18,83	16
1003342	PP DOUBLE CLAMP SADDLE REINF. 140-2"	1,0975	0,06150	18,48	16
1003343	PP DOUBLE CLAMP SADDLE REINF. 140-2 1/2"	1,278406	0,06150	21,415	16
1003344	PP DOUBLE CLAMP SADDLE REINF. 140-3"	1,191	0,06150	20,056	16
1003345	PP DOUBLE CLAMP SADDLE REINF. 160-1"	1,1883	0,06150	19,934	16
1003346	PP DOUBLE CLAMP SADDLE REINF. 160-1 1/4"	1,237	0,06150	20,756	16
1003347	PP DOUBLE CLAMP SADDLE REINF. 160-1 1/2"	1,202469	0,06150	20,16	16
1003348	PP DOUBLE CLAMP SADDLE REINF. 160-2"	1,118719	0,06150	18,82	16
1003349	PP DOUBLE CLAMP SADDLE REINF. 160-2 1/2"	1,411	0,06150	20,718	12
1003350	PP DOUBLE CLAMP SADDLE REINF. 160-3"	1,2949	0,08677	21,74	16
1003351	PP DOUBLE CLAMP SADDLE REINF. 200-1 1/4"	2,068	0,06150	17,508	8
1003352	PP DOUBLE CLAMP SADDLE REINF. 200-1 1/2"	2,06	0,06150	17,444	8
1003353	PP DOUBLE CLAMP SADDLE REINF. 200-2"	2,104	0,06150	17,832	8
1003354	PP DOUBLE CLAMP SADDLE REINF. 200-2 1/2"	2,238	0,06150	18,868	8
1003355	PP DOUBLE CLAMP SADDLE REINF. 200-3"	2,146	0,06150	18,168	8
1003356	PP DOUBLE CLAMP SADDLE REINF. 200-4"	2,294	0,06150	19,352	6
1003493	PP DOUBLE CLAMP SADDLE REINF. 180-1"	1,6305	0,03129	13,5409	8



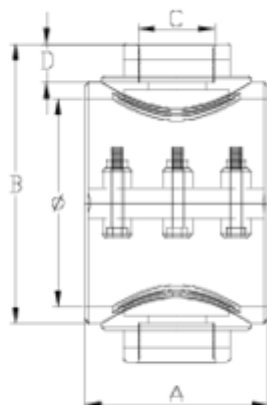
## Clamp saddles

# Reinforced double clamp saddle 6 screws

## ITEM 134



REFERENCE	DESCRIPTION	Net weight	Volumen (m <sup>3</sup> )	contenido.Peso bruto	Unidades lote
1003494	PP DOUBLE CLAMP SADDLE REINF. 180-1 1/4"	1,6513	0,03129	13,7073	8
1003495	PP DOUBLE CLAMP SADDLE REINF. 180-1 1/2"	1,6561	0,03129	13,7457	8
1003496	PP DOUBLE CLAMP SADDLE REINF. 180-2"	1,6661	0,03129	13,8257	8
1003497	PP DOUBLE CLAMP SADDLE REINF. 180-2 1/2"	1,6889	0,03129	14,0081	8
1003498	PP DOUBLE CLAMP SADDLE REINF. 180-3"	1,7021	0,03129	14,1137	8



## ITEM 134 | Reinforced double clamp saddle 6 screws

Código	f tubo - C	Peso (g)	A	B	D	PN	TIPO ROSCA
03138	140 - 1/2"	1097.6	134	185	16	PN10	BSP
03142	140 - 3/4"	1106	134	185	17	PN10	BSP
03339	140 - 1"	1060.4	134	190	21	PN10	BSP
03340	140 - 1 1/4"	1073.6	134	195	23	PN10	BSP
03341	140 - 1 1/2"	1079.6	134	195	31	PN10	BSP
03342	140 - 2"	1096.4	134	203	38	PN10	BSP
03343	140 - 2 1/2"	1161.2	134	203	44	PN10	BSP
03344	140 - 3"	1146.4	134	112	53	PN10	BSP
03130	160 - 1/2"	1149.6	136	210	16	PN10	BSP
03134	160 - 3/4"	1158	136	210	17	PN10	BSP



## ITEM 134 | Reinforced double clamp saddle 6 screws

03345	160 - 1"	1190.4	136	210	21	PN10	BSP
03346	160 - 1 1/4"	1203.6	136	210	23	PN10	BSP
03347	160 - 1 1/2"	1246	136	210	31	PN10	BSP
03348	160 - 2"	1262.8	136	218	38	PN10	BSP
03349	160 - 2 1/2"	1327.6	136	218	44	PN10	BSP
03350	160 - 3"	1307.6	136	218	53	PN10	BSP
03493	180 - 1"	1443.6	152	234	21	PN10	BSP
03494	180 - 1 1/4"	1461.6	152	234	23	PN10	BSP
03495	180 - 1 1/2"	1462.8	152	234	31	PN10	BSP
03496	180 - 2"	1489.2	152	244	38	PN10	BSP
03497	180 - 2 1/2"	1564	152	244	44	PN10	BSP
03498	180-3"	1535.2	152	260	53	PN10	BSP
03351	200 - 1 1/4"	2077.2	173	244	23	PN6	BSP
03352	200 - 1 1/2"	2081.12	173	250	31	PN6	BSP
03353	200 - 2"	2104.16	173	254	38	PN6	BSP
03354	200 - 2 1/2"	2253.2	173	254	44	PN6	BSP
03355	200 - 3"	2128.16	173	266	53	PN6	BSP
03356	200 - 4"	2200.16	173	266	61	PN6	BSP



## Product Documents



## Product Certificates

## Company Certificates

