

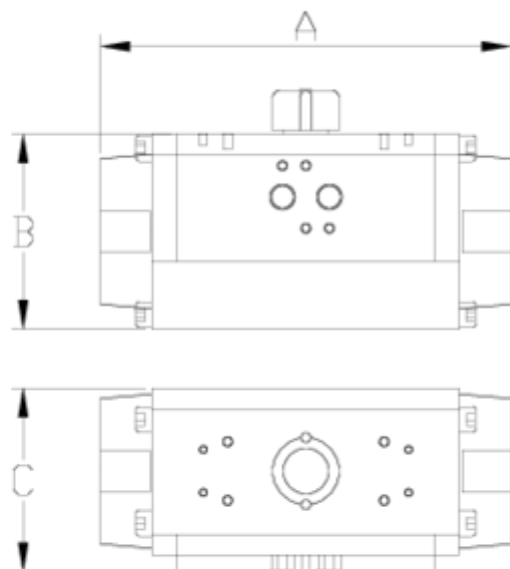


## Butterfly valves

# PNEUMATIC ACTUATOR DOUBLE EFFECT ITEM 817



REFERENCE	DESCRIPTION	Net weight	Volumen (m <sup>3</sup> )	Gross weight	Unidades lote
1009509	DOUBLE ACTING PNEUMATIC ACTUATOR H075DE	3,18	0,00891	3,18	1
1009510	DOUBLE ACTING PNEUMATIC ACTUATOR H085DE	4,8	0,00000	4,8	1
1009511	DOUBLE ACTING PNEUMATIC ACTUATOR H100DE	6,7	0,00000	6,7	1
1009512	DOUBLE ACTING PNEUMATIC ACTUATOR H115DE	9,387	0,02243	9,88	1
1009526	DOUBLE ACTING PNEUMATIC ACTUATOR H050DE	1,8255	0,00472	1,8716	1
1009535	DOUBLE ACTING PNEUMATIC ACTUATOR H200DE	0	0,00000	0	1



## ITEM 817 | PNEUMATIC ACTUATOR DOUBLE EFFECT

CÓDIGO	MODELO	PESO	A	B	C	Volumen (L)
09526	H050DE	1100	138	67	75	0.23
09509	H075DE	2900	210	100	94	0.61
09510	H085DE	4200	228	110	104	0.98
09511	H100DE	5800	280	120	105	1.8
09512	H115DE	9200	310	134	139	2.8



## Product Documents



## Product Certificates



## Company Certificates

