

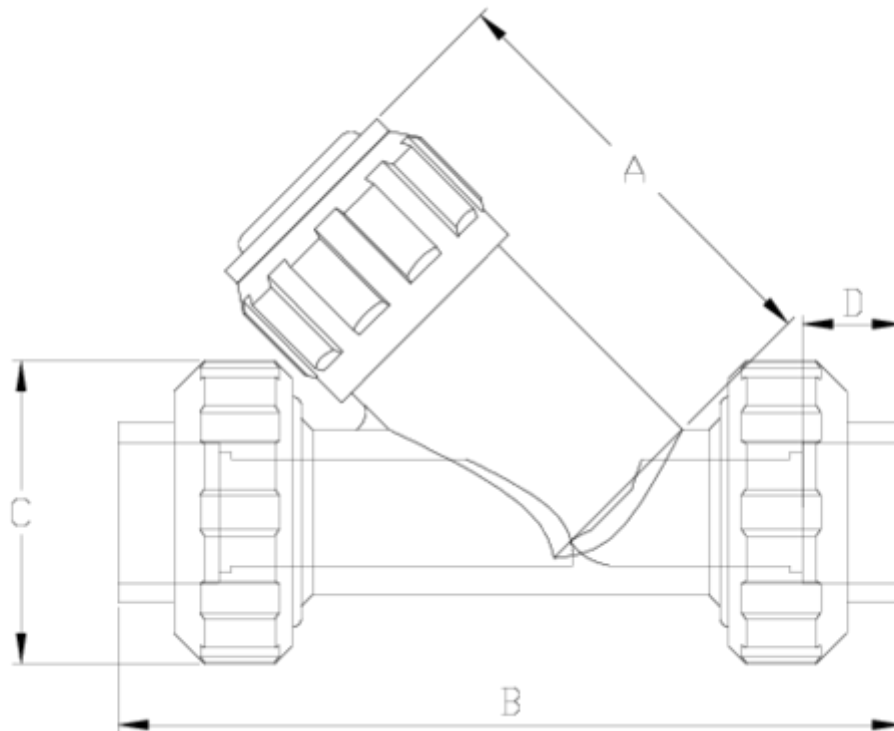


Angle seat valves and filters

Angle seat check valve, Male plain outlet - EPDM seal ITEM 528

| REFERENCE | DESCRIPTION | Net weight | Volumen (m ³) | Gross weight | Unidades lote |
|-----------|---|------------|---------------------------|--------------|---------------|
| 1021311 | ANGLE SEAT CHECK V.,FEM. S. SOCK. OUT. 20 | 0,19783 | 0,01553 | 2,305 | 10 |
| 1021312 | ANGLE SEAT CHECK V.,FEM. S. SOCK. OUT. 25 | 0,39933 | 0,01553 | 4,32 | 10 |
| 1021313 | ANGLE SEAT CHECK V.,FEM. S. SOCK. OUT. 32 | 0,6748 | 0,01553 | 7,075 | 10 |





ITEM 528 | Angle seat check valve, Male plain outlet - EPDM seal

| CÓDIGO | f | DN | Peso (g) | A | B | C | D | PN | MEDIDA |
|--------|----|----|----------|-----|-----|----|----|------|---------|
| 21311 | 20 | 15 | 236.775 | 73 | 138 | 52 | 16 | PN16 | MÉTRICO |
| 21312 | 25 | 20 | 359.1 | 85 | 162 | 59 | 19 | PN16 | MÉTRICO |
| 21313 | 32 | 25 | 541.485 | 102 | 181 | 69 | 22 | PN16 | MÉTRICO |



Product Documents



Product Certificates

Company Certificates

