



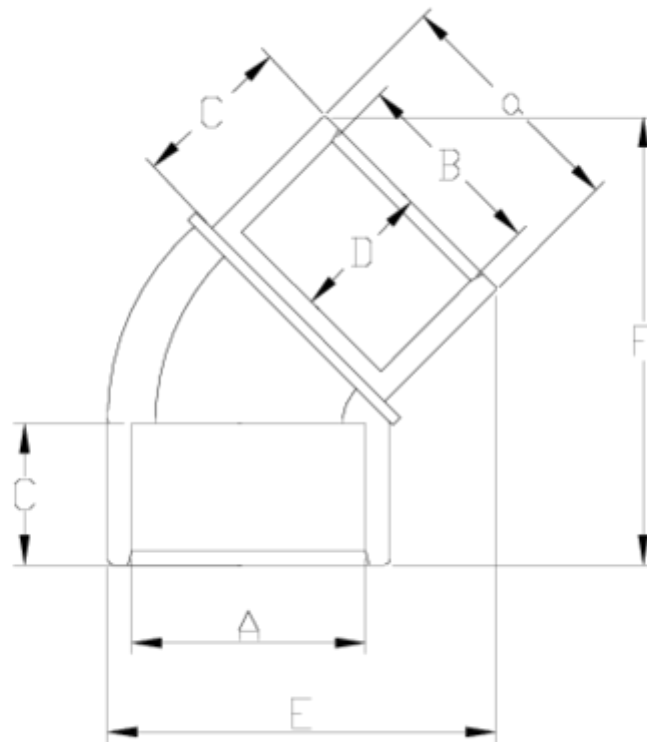
## PVC-U pressure fittings

# 45° reducing elbow

### ITEM 198

REFERENCE	DESCRIPTION	Net weight	Volumen (m <sup>3</sup> )	Gross weight	Unidades lote
1001742	ELBOW 45° FEMALE-MALE 32X32X25	0,038933	0,01553	4,22	100
1001743	ELBOW 45° FEMALE-MALE 40X40X32	0,069705	0,02244	4,67	60
1001744	ELBOW 45° FEMALE-MALE 50X50X40	0,130491	0,03129	7,75	55
1001745	ELBOW 45° FEMALE-MALE 63X63X50	0,202216	0,03682	10,66	50
1001746	ELBOW 45° FEMALE-MALE 75X75X63	0,320987	0,04117	10,27	30
1001747	ELBOW 45° FEMALE-MALE 90X90X75	0,498725	0,04117	8,62	16





## ITEM 198 | 45° reducing elbow

CÓDIGO	A-a-B	PESO (g)	C	D	E	F	PN	MEDIDA
01742	32x32x25	40	22	19	55	58	PN16	MÉTRICO
01743	40x40x32	65	26	22	63	87	PN16	MÉTRICO
01744	50x50x40	130	31	26	88	97	PN16	MÉTRICO
01745	63x63x50	202	38	31	106	117	PN16	MÉTRICO
01746	75x75x63	313	45	38	121	141	PN16	MÉTRICO



## Product Documents



## Product Certificates



## Company Certificates

