



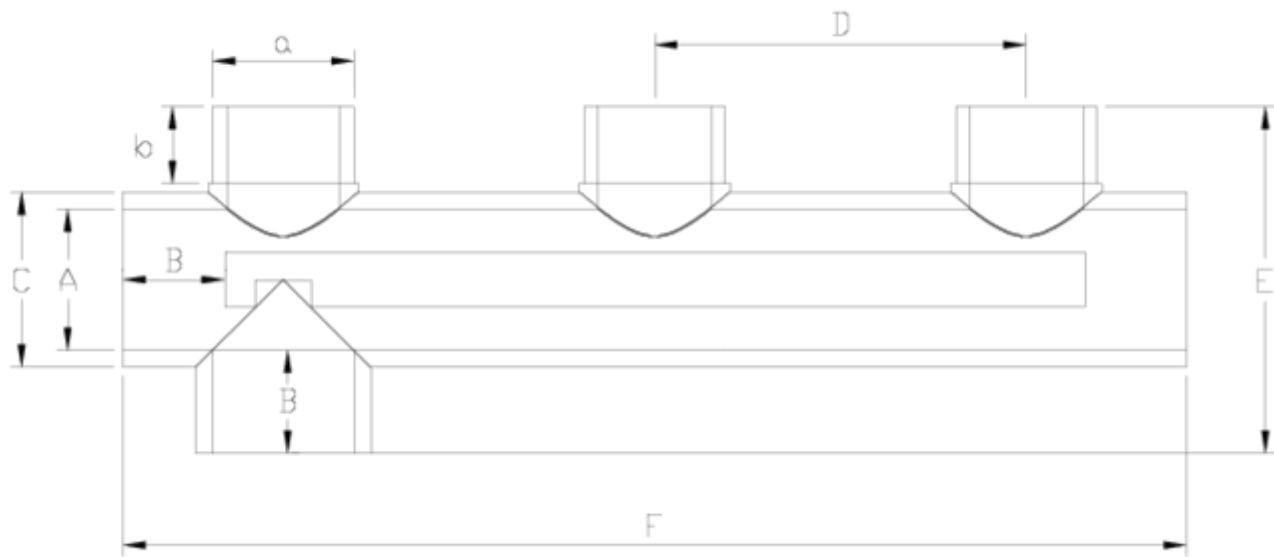
## PVC-U pressure fittings

# 3-way manifold lateral outlet

## ITEM 626

REFERENCE	DESCRIPTION	Net weight	Volumen (m <sup>3</sup> )	Gross weight	Unidades lote
1001273	MANIFOLD LATERAL PLAIN OUTLET 32	0,38453	0,01553	4,29	10
1001275	MANIFOLD LATERAL PLAIN OUTLET 50	0,7805	0,01553	3,504	4
1001276	MANIFOLD LATERAL PLAIN OUTLET 63	1,29385	0,03648	5,845	4
1001722	PVC MANIFOLD 3V FEMALE-MALE 50	0,79075	0,02244	3,653	4
1001723	PVC MANIFOLD 3V FEMALE-MALE 63	0	0,04460	0	4





## ITEM 626 | 3-way manifold lateral outlet

Código	A-a	Peso (g)	b	B	C	D	E	F	PN	MEDIDA
01273	32	470	21	22	40	115	88	308	PN16	MÉTRICO
01275	50	677	21	34	61	131	123	393	PN16	MÉTRICO
01276	63	1143	26	38	75	165	151	460	PN16	MÉTRICO



## Product Documents



## Product Certificates



## Company Certificates

